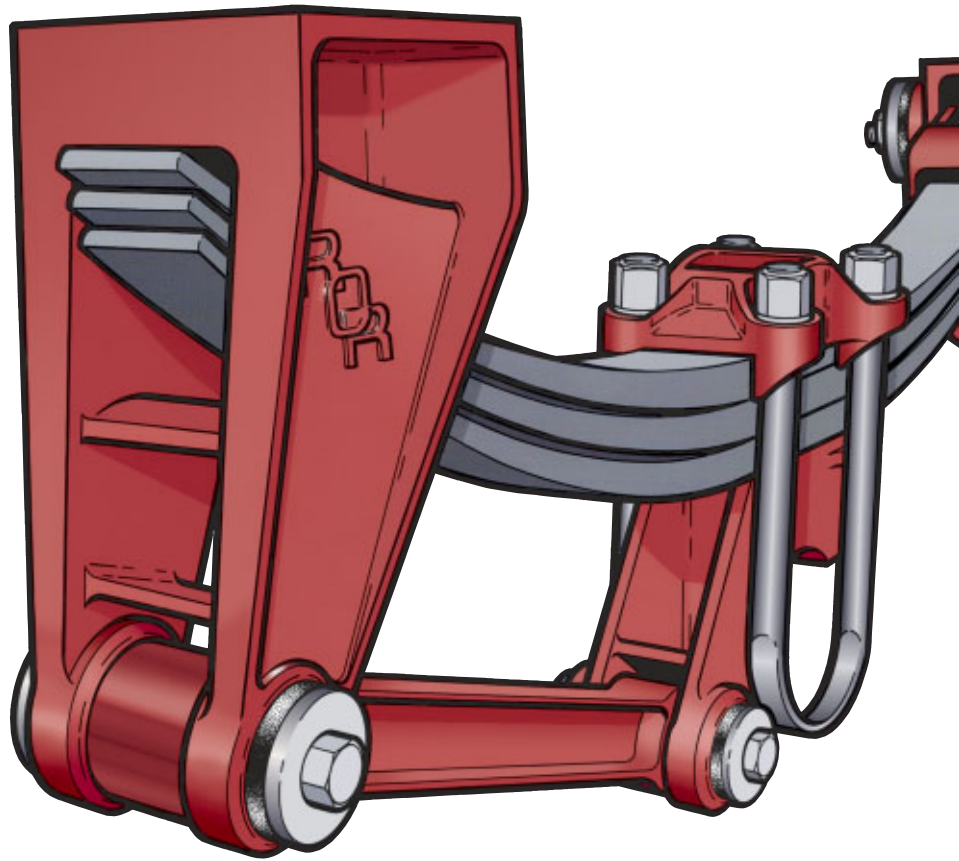


ROR Trailer Products

SMT Mechanical Suspensions



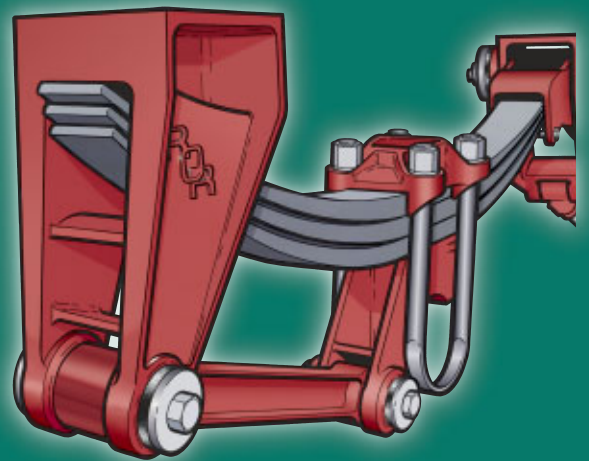
SMT International Suspensions

MERITOR's SMT Suspension is one of the lightest and simplest mechanical suspensions available today.

The SMT has an equaliser assembly with twin tapered bushes; the torque arm assembly also has tapered bushes giving the user high durability and minimal maintenance.

The hanger bracket design is kept as short as possible to minimise the torsional loads transmitted to the trailer – particularly when turning.

Common length torque arms can now be fitted front and rear for standard spreads, due to the design of the equaliser bracket.



Suspension Ratings

The following suspension ratings are given as a guide only and full engineering approval must be obtained from the Engineering Department, MERITOR.

Capacity at Ground kilograms	Suspension Type, Std and U Slung	
7620	SMT 16L	
8000	SMT 16/3L	
8740	SMT LL17	
9400	SMT 20L, SMT 20S & SMT LL20	
9000	SMT 20HDL	Continental Rating•
10170	SMT 22L & SMT 22S	
10170	†SMT 22HDL, SMT LL22HD & SMT 22/3L	Continental Rating
12000	SMT 27HD & SMT 27HDL	
15240	SMT 32L	
16000	SMT 32/3L	
17480	SMT LL34	
18800	SMT 36L, SMT 36S & SMT LL36	
16000	SMT 36HDL	Continental Rating•
19300	SMT 42L, SMT 42S, SMT 42/3L & SMT 42HDL	
20340	SMT 44L, SMT 44S, SMT LL44, SMT 44/3L & SMT 44HD	SMT LL44 Continental Rating Rating Limited in UK Continental Rating
20340	‡*SMT 44 HDL, SMT LL44HD & SMT 44W/3L	
20340	SMT 44WL & SMT 44WS	
20340	‡*SMT 44WHDL	Continental Rating
22500	SMT 47S	UK Rating, Higher design ratings are available on request
23000	SMT 50 HDL	
24000	SMT 60HD & SMT 60HDL	
24000	SMT 54, SMT 54L, SMT 54HDL, SMT 54/2L, SMT 54SHDL, SMT 54S, SMT 54/3L, SMT LL54HD & SMT LL67.5HD	Continental Rating, Higher design ratings are available on request
30510	SMT 67.5, SMT 67.5/3L	
36000	SMT 80HD & SMT 80HDL	

* Capacity 20000 kg for 1810 axle spread
 • Special for Benelux type approval
 † For French Market only. Capacity 10500 kg
 ‡ For French Market only. Capacity 21000 kg

Suspension Identification

EXAMPLE:

Ride Height			Axle Spread		
SMT 54	3L	18	“P” or “S”*	9	0 or U or US
Susp Type	Spring Type		Parallel or Sloped*		0 – Offset Equal U – Underslung US – Underslung Special

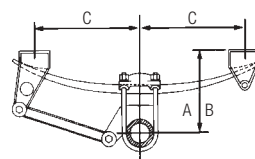
* If “S” is quoted, and the ride height quoted is 18 this is the ride height on the forward axle, i.e. Tri-Axle 18F, 17C, 16R. Tandem 18F, 17R.

AXLE SPREADS

1 = 1040mm	2 = 1080mm	3 = 1100mm	4 = 1135mm	5 = 1145mm	6 = 1200mm	7 = 1245mm
8 = 1310mm	9 = 1360mm	10 = 1525mm	11 = 1810mm	12 = 1896mm	13 = 2045mm	

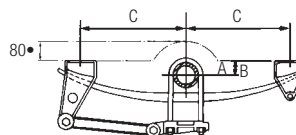
Single SMT Suspensions

Single Leaf Standard



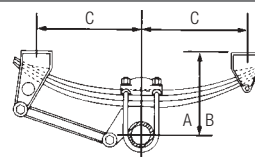
Suspension Type	Suspension Ref.	Capacity kgs	A Unladen mm	B Laden mm	C Approx. mm	Weight kgs	Spring Part No.	No. of Leaves
SMT 20S-1A-7/16	SMT 20S 16	9400	400	377	518	132	21017788	Single leaf
SMT 20S-1A-7/17	SMT 20S 17	9400	425	402	518	134	21017788	Single leaf
SMT 20S-1A-7/18	SMT 20S 18	9400	451	428	518	136	21017788	Single leaf
SMT 22S-1A-7/16†	SMT 22S 16	10170	400	380	518	136	21017560	Single leaf
SMT 22S-1A-7/17†	SMT 22S 17	10170	425	405	518	138	21017560	Single leaf
SMT 22S-1A-7/18†	SMT 22S 18	10170	451	431	518	141	21017560	Single leaf

Single Leaf Underslung



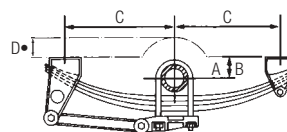
Suspension Type	Suspension Ref.	Capacity kgs	A Unladen mm	B Laden mm	C Approx. mm	Weight kgs	Spring Part No.	No. of Leaves
SMT 20S-1A-10AU	SMT 20S 3U	9400	70	47	518	131	21017788	Single leaf
SMT 22S-1A-10AU	SMT 22S 3U	10170	70	50	518	133	21017560	Single leaf

Three Leaf Standard



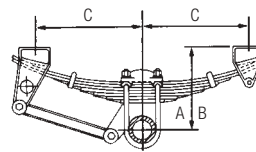
Suspension Type	Suspension Ref.	Capacity kgs	A Unladen mm	B Laden mm	C Approx. mm	Weight kgs	Spring Part No.	No. of Leaves
SMT 16/3L-1A-7/15	SMT 16/3L 15	8000	381	354	413	140	21215420	3 leaf
SMT 16/3L-1A-7/16	SMT 16/3L 16	8000	407	380	413	142	21215420	3 leaf
SMT 22/3L-1A-7/16†	SMT 22/3L 16	10170	400	353	518	164	21204279	3 leaf
SMT 22/3L-1A-7/17†	SMT 22/3L 17	10170	425	377	518	166	21204279	3 leaf
SMT 22/3L-1A-7/18†	SMT 22/3L 18	10170	451	403	518	169	21204279	3 leaf

Three Leaf Underslung



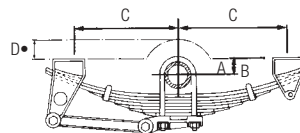
Suspension Type	Suspension Ref.	Capacity kgs	A Unladen mm	B Laden mm	C Approx. mm	D mm	Weight kgs	Spring Part No.	No. of Leaves
SMT 16/3L-1A-10AU	SMT 16/3L 2U	8000	52	25	413	95	139	21217432	3 leaf
SMT 22/3L-1A-10AU	SMT 22/3L 4U	10170	100	52	518	80	166	21204923	3 leaf

Multi Leaf Standard



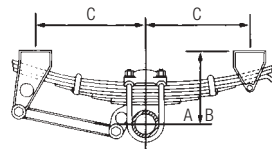
Suspension Type	Suspension Ref.	Capacity kgs	A Unladen mm	B Laden mm	C Approx. mm	Weight kgs	Spring Part No.	No. of Leaves
SMT 16L-1A-7/16	SMT 16L 16	7620	400	359	457	161	21019961	5 + 2p
SMT 16L-1A-7/17	SMT 16L 17	7620	425	384	457	163	21019961	5 + 2p
SMT 16L-1A-7/18	SMT 16L 18	7620	451	410	457	165	21019961	5 + 2p
SMT 20L-1A-7/16	SMT 20L 16	9400	400	350	518	167	21019750	6 + 1p
SMT 20L-1A-7/17	SMT 20L 17	9400	425	375	518	169	21019750	6 + 1p
SMT 20L-1A-7/18	SMT 20L 18	9400	451	401	518	172	21019750	6 + 1p
SMT 20HDL-1A-7/16	SMT 20HDL 16	9000	400	364	518	174	21200108	7 leaf
SMT 22L-1A-7/16	SMT 22L 16	10170	400	361	518	174	21200108	7 leaf
SMT 22L-1A-7/17	SMT 22L 17	10170	425	386	518	176	21200108	7 leaf
SMT 22L-1A-7/18	SMT 22L 18	10170	451	412	518	179	21200108	7 leaf
SMT 22HDL-1A-7/17†	SMT 22HDL 17	10170	425	368	518	192	21200078	8 leaf
SMT 22HDL-1A-7/18†	SMT 22HDL 18	10170	451	394	518	194	21200078	8 leaf
SMT 27HD-1A-7/18	SMT 27HD 18	12000	450	402	518	231	21025427	12 leaf
SMT 27HDL-1A-7/17	SMT 27HDL 17	12000	430	388	518	221	21203522	10 leaf

Multi Leaf Underslung



Suspension Type	Suspension Ref.	Capacity kgs	A Unladen mm	B Laden mm	C Approx. mm	D mm	Weight kgs	Spring Part No.	No. of Leaves
SMT 16L-1A-10AU	SMT 16L 3U	7620	78	37	457	85	160	21020425	5 + 2p
SMT 20L-1A-10AU	SMT 20L 3U	9400	78	28	518	100	170	21200058	6 + 2p
SMT 20HDL-1A-10AU	SMT 20HDL 3U	9000	78	42	518	80	173	21200877	7 leaf
SMT 22L-1A-10AU	SMT 22L 3U	10170	78	39	518	85	173	21200877	7 leaf
SMT 22HDL-1A-10AU†	SMT 22HDL 4U	10170	92	35	518	80	191	21200431	8 leaf
SMT 27HD-1A-10AU	SMT 27HD 3U	12000	77	29	518	95	228	21211035	12 leaf
SMT 27HDL-1A-10AU	SMT 27HDL 3U	12000	76	34	518	90	218	21220527	10 leaf

Multi Leaf Low Height



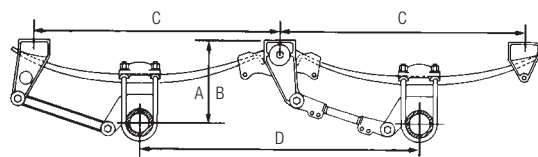
Suspension Type	Suspension Ref.	Capacity kgs	A Unladen mm	B Laden mm	C Approx. mm	Weight kgs	Spring Part No.	No. of Leaves
SMT LL17-1A-7/13	SMT LL17 HD13	8740	330	297	380	150	21024588	11 leaf
SMT LL20-1A-7/13	SMT LL20 HD13	9400	330	300	518	183	21024589	6 leaf
SMT LL22HD-1A-7/13†	SMT LL22 HD13	10170	343	311	518	190	21024587	7 leaf

† For French Market only. Capacity 10500 kg

• To give required axle clearance under 2g bump condition, trailer builder should provide brackets or alter frame cutouts

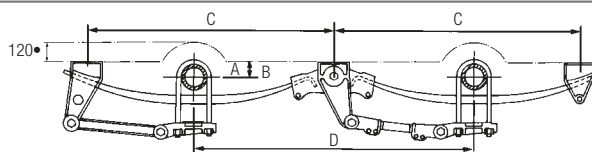
Tandem SMT Suspensions

Single Leaf Standard



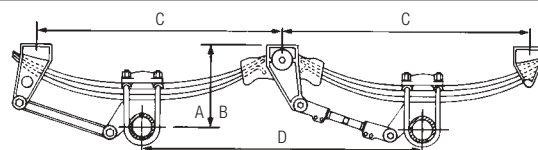
Suspension Type	Suspension Ref.	Capacity kgs	A Unladen mm	B Laden mm	C mm	D Approx. mm	Weight kgs	Spring Part No.	No. of Leaves
SMT 36S-2A-7/16	SMT 36S 16 P9	18800	400	377	1194	1360	280	21017788	Single leaf
SMT 36S-2A-7/17	SMT 36S 17 P9	18800	425	402	1194	1360	283	21017788	Single leaf
SMT 36S-2A-7/18	SMT 36S 18 P9	18800	451	428	1194	1360	286	21017788	Single leaf
SMT 44S-2A-7/16†	SMT 44S 16 P9	20340	400	380	1194	1360	288	21017560	Single leaf
SMT 44S-2A-7/17†	SMT 44S 17 P9	20340	425	405	1194	1360	291	21017560	Single leaf
SMT 44S-2A-7/18†	SMT 44S 18 P9	20340	451	431	1194	1360	294	21017560	Single leaf

Single Leaf Underslung



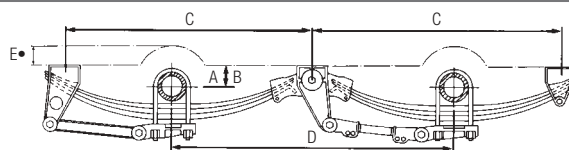
Suspension Type	Suspension Ref.	Capacity kgs	A Unladen mm	B Laden mm	C mm	D Approx. mm	Weight kgs	Spring Part No.	No. of Leaves
SMT 36S-2A-10AU	SMT 36S 3P 9U	18800	70	47	1194	1360	278	21017788	Single leaf
SMT 44S-2A-10AU	SMT 44S 3P 9U	20340	70	50	1194	1360	286	21017560	Single leaf

Three Leaf Standard



Suspension Type	Suspension Ref.	Capacity kgs	A Unladen mm	B Laden mm	C mm	D Approx. mm	Weight kgs	Spring Part No.	No. of Leaves
SMT 32/3L-2A-7/15	SMT 32/3L 15 P5	16000	381	354	980	1145	300	21215420	3 leaf
SMT 32/3L-2A-7/16	SMT 32/3L 16 P5	16000	407	380	980	1145	303	21215420	3 leaf
SMT 44/3L-2A-7/16†	SMT 44/3L 16 P9	20340	400	352	1194	1360	345	21204279	3 leaf
SMT 44/3L-2A-7/17†	SMT 44/3L 17 P9	20340	425	377	1194	1360	348	21204279	3 leaf
SMT 44/3L-2A-7/18†	SMT 44/3L 18 P9	20340	451	403	1194	1360	355	21204279	3 leaf

Three Leaf Underslung

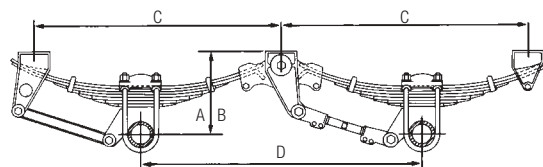


Suspension Type	Suspension Ref.	Capacity kgs	A Unladen mm	B Laden mm	C mm	D Approx. mm	E mm	Weight kgs	Spring Part No.	No. of Leaves
SMT 32/3L-2A-10AU	SMT 32/3L 2P 5U	16000	52	25	980	1145	130	298	21217432	3 leaf
SMT 44/3L-2A-10AU	SMT 44/3L 4P 9U	20340	100	52	1194	1360	120	350	21204923	3 leaf

† For French Market only. Capacity 21000 kg

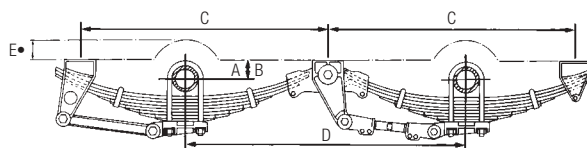
• To give required axle clearance under 2g bump condition, trailer builder should provide brackets or alter frame cutouts

Multi Leaf Standard



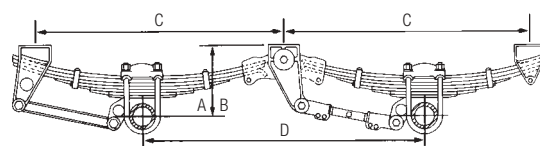
Suspension Type	Suspension Ref.	Capacity kgs	A Unladen mm	B Laden mm	C mm	D Approx. mm	Weight kgs	Spring Part No.	No. of Leaves
SMT 32L-2A-7/16	SMT 32L16 P7	15240	400	359	1089	1245	327	21019961	5 + 2p
SMT 32L-2A-7/17	SMT 32L17 P7	15240	425	384	1089	1245	330	21019961	5 + 2p
SMT 32L-2A-7/18	SMT 32L18 P7	15240	451	410	1089	1245	336	21019961	5 + 2p
SMT 36L-2A-7/16	SMT 36L16 P9	18800	400	350	1194	1360	351	21019750	6 + 1p
SMT 36L-2A-7/17	SMT 36L17 P9	18800	425	375	1194	1360	354	21019750	6 + 1p
SMT 36L-2A-7/18	SMT 36L18 P9	18800	451	401	1194	1360	360	21019750	6 + 1p
SMT 36HDL-2A-7/16	SMT 36HDL16 P9	18000	400	363	1194	1360	365	21200108	7 leaf
SMT 36HDL-2A-7/17	SMT 36HDL17 P9	18000	425	388	1194	1360	368	21200108	7 leaf
SMT 44L-2A-7/16	SMT 44L16 P9	20340	400	360	1194	1360	365	21200108	7 leaf
SMT 44L-2A-7/17	SMT 44L17 P9	20340	425	385	1194	1360	368	21200108	7 leaf
SMT 44L-2A-7/18	SMT 44L18 P9	20340	451	411	1194	1360	375	21200108	7 leaf
SMT 44HDL-2A-7/17†	SMT 44HDL17 P9	20340	425	381	1194	1360	401	21200078	8 leaf
SMT 44HDL-2A-7/18†	SMT 44HDL18 P9	20340	451	407	1194	1360	403	21200078	8 leaf
SMT 44HD-2A-7/15	SMT 44HD15 P3	20340	380	348	950	1100	346	21200067	10 leaf
SMT 44HD-2A-7/16	SMT 44HD16 P3	20340	405	373	950	1100	349	21200067	10 leaf
SMT 44HD-2A-7/16	SMT 44HD16 P6	20340	400	362	1036	1200	367	21212847	8 leaf
SMT 44HD-2A-7/17	SMT 44HD17 P6	20340	425	387	1036	1200	370	21212847	8 leaf
SMT 50HDL-2A-7/17	SMT 50HDL17 P9	23000	438	388	1194	1360	432	21201289	9 leaf
SMT 60HD-2A-7/18	SMT 60HD18 P9	24000	450	402	1194	1360	472	21025427	12 leaf
SMT 60HDL-2A-7/17	SMT 60HDL17 P9	24000	430	388	1194	1360	450	21203522	10 leaf

Multi Leaf Underslung



Suspension Type	Suspension Ref.	Capacity kgs	A Unladen mm	B Laden mm	C mm	D Approx. mm	E mm	Weight kgs	Spring Part No.	No. of Leaves
SMT 32L-2A-10AU	SMT 32L 3P 7U	15240	78	37	1089	1245	120	325	21020425	5 + 2p
SMT 36L-2A-10AU	SMT 36L 3P 9U	18800	78	28	1194	1360	135	349	21200058	6 + 1p
SMT 36HDL-2A-10AU	SMT 36HDL 3P 9U	18000	78	41	1194	1360	120	363	21200877	7 leaf
SMT 44L-2A-10AU	SMT 44L 3P 9U	20340	78	38	1194	1360	120	363	21200877	7 leaf
SMT 44HDL-2A-10AU†	SMT 44HDL 4P 9U	20340	92	48	1194	1360	120	399	21200431	8 leaf
SMT 50HDL-2A-10AU	SMT 50HDL 3.5 9U	23000	88	38	1194	1360	125	430	21211383	9 leaf
SMT 60HD-2A-10AU	SMT 60HD 3P 9U	24000	77	29	1194	1360	135	470	21211035	12 leaf
SMT 60HDL-2A-10AU	SMT 60HDL 3P 9U	24000	74	32	1194	1360	135	448	21220527	10 leaf

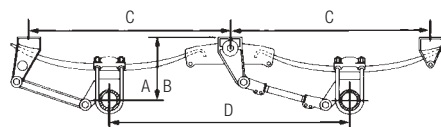
Multi Leaf Low Height



Suspension Type	Suspension Ref.	Capacity kgs	A Unladen mm	B Laden mm	C mm	D Approx. mm	Weight kgs	Spring Part No.	No. of Leaves
SMT LL34-2A-7/13	SMT LL34HD13 P2	17480	333	297	930	1080	318	21024588	11 leaf
SMT LL36-2A-7/13	SMT LL36HD13 P9	18800	330	300	1194	1360	382	21014589	6 leaf
SMT LL44HD-2A-7/13	SMT LL44HD13 P9	20340	343	311	1194	1360	398	21024587	7 leaf

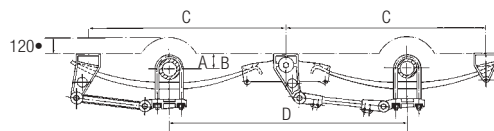
Semi-Widespread SMT Suspensions

Single Leaf Standard



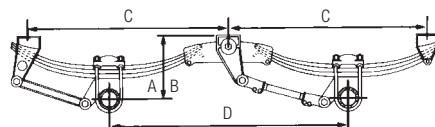
Suspension Type	Suspension Ref.	Capacity kgs	A Unladen mm	B Laden mm	C mm	D Approx. mm	Weight kgs	Spring Part No.	No. of Leaves
SMT 42S-2A-7/16	SMT 42S16 P10	19320	400	380	1280	1525	296	21017560	Single leaf
SMT 42S-2A-7/17	SMT 42S17 P10	19320	425	405	1280	1525	298	21017560	Single leaf
SMT 42S-2A-7/18	SMT 42S18 P10	19320	451	431	1280	1525	301	21017560	Single leaf

Single Leaf Underslung



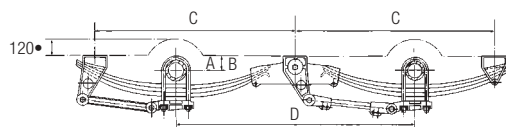
Suspension Type	Suspension Ref.	Capacity kgs	A Unladen mm	B Laden mm	C mm	D Approx. mm	Weight kgs	Spring Part No.	No. of Leaves
SMT 42S-2A-10AU	SMT 42S3P10U	19320	70	50	1280	1525	298	21017560	Single leaf

Three Leaf Standard



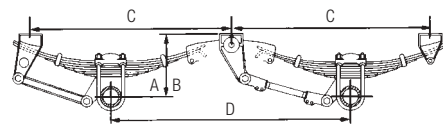
Suspension Type	Suspension Ref.	Capacity kgs	A Unladen mm	B Laden mm	C mm	D Approx. mm	Weight kgs	Spring Part No.	No. of Leaves
SMT 42/3L-2A-7/16	SMT 42/3L16 P10	19320	400	353	1280	1525	361	21204279	3 leaf
SMT 42/3L-2A-7/17	SMT 42/3L17 P10	19320	425	378	1280	1525	364	21204279	3 leaf
SMT 42/3L-2A-7/18	SMT 42/3L18 P10	19320	451	403	1280	1525	367	21204279	3 leaf

Three Leaf Underslung



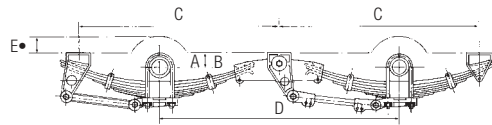
Suspension Type	Suspension Ref.	Capacity kgs	A Unladen mm	B Laden mm	C mm	D Approx. mm	Weight kgs	Spring Part No.	No. of Leaves
SMT 42/3L-2A-10AU	SMT 42/3L4 P10U	19320	100	52	1280	1525	363	21204923	3 leaf

Multi Leaf Standard



Suspension Type	Suspension Ref.	Capacity kgs	A Unladen mm	B Laden mm	C mm	D Approx. mm	Weight kgs	Spring Part No.	No. of Leaves
SMT 42L-2A-7/16	SMT 42L16 P10	19320	400	363	1280	1525	367	21200108	7 leaf
SMT 42L-2A-7/17	SMT 42L17 P10	19320	425	388	1280	1525	370	21200108	7 leaf
SMT 42L-2A-7/18	SMT 42L18 P10	19320	451	414	1280	1525	373	21200108	7 leaf
SMT 42HDL-2A-7/17	SMT 42HDL17 P10	19320	425	380	1280	1525	406	21200078	8 leaf
SMT 42HDL-2A-7/18	SMT 42HDL18 P10	19320	451	406	1280	1525	409	21200078	8 leaf

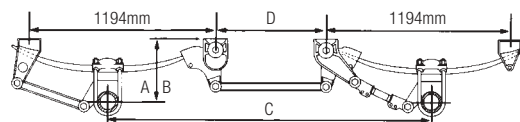
Multi Leaf Underslung



Suspension Type	Suspension Ref.	Capacity kgs	A Unladen mm	B Laden mm	C mm	D Approx. mm	E mm	Weight kgs	Spring Part No.	No. of Leaves
SMT 42L-2A-10AU	SMT 42L3P 10U	19320	78	38	1280	1525	120	368	21200877	7 leaf
SMT 42HDL-2A-10AU	SMT 42HDL4P 10U	19320	92	48	1280	1525	120	407	21200431	8 leaf

Widespread SMT Suspensions

Single Leaf Standard



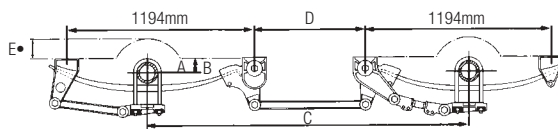
Suspension Type	Suspension Ref.	Capacity kgs	A Unladen mm	B Laden mm	C Approx. mm	D mm	Weight kgs	Spring Part No.	No. of Leaves
SMT 44WS-2A-7/16-1810†	SMT 44WS16 P11	20000	400	380	1810	464	346	21017560	Single leaf
SMT 44WS-2A-7/17-1810†	SMT 44WS17 P11	20000	425	405	1810	464	348	21017560	Single leaf
SMT 44WS-2A-7/16-1896†	SMT 44WS16 P12	20340	400	380	1896	549	348	21017560	Single leaf
SMT 44WS-2A-7/17-1896†	SMT 44WS17 P12	20340	425	405	1896	549	350	21017560	Single leaf
SMT 44WS-2A-7/16-2045†	SMT 44WS16 P13	20340	400	380	2045	699	351	21017560	Single leaf
SMT 44WS-2A-7/17-2045†	SMT 44WS17 P13	20340	425	405	2045	699	353	21017560	Single leaf

† For French Market only. Capacity 21000 kg

• To give required axle clearance under 2g bump condition, trailer builder should provide brackets or alter frame cutouts

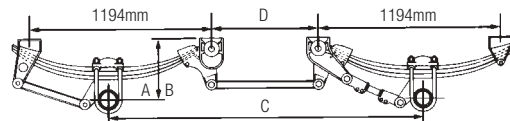
Widespread SMT Suspensions

Single Leaf Underslung



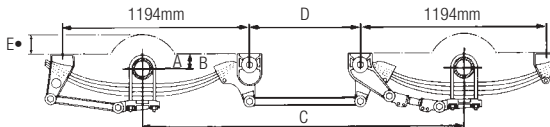
Suspension Type	Suspension Ref.	Capacity kgs	A Unladen mm	B Laden mm	C Approx. mm	D mm	E mm	Weight kgs	Spring Part No.	No. of Leaves
SMT 44WS-2A-10AU-1810†	SMT 44WS3P 11U	20000	70	50	1810	464	120	342	21017560	Single leaf
SMT 44WS-2A-10AU-1896†	SMT 44WS3P 12U	20340	70	50	1896	549	120	344	21017560	Single leaf
SMT 44WS-2A-10AU-2045†	SMT 44WS3P 13U	20340	70	50	2045	699	120	346	21017560	Single leaf

Three Leaf Standard



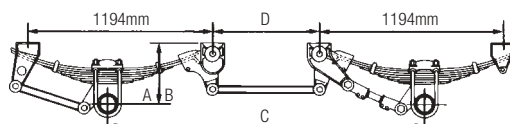
Suspension Type	Suspension Ref.	Capacity kgs	A Unladen mm	B Laden mm	C Approx. mm	D mm	Weight kgs	Spring Part No.	No. of Leaves
SMT 44W/3L-2A-7/16-1810†	SMT 44W3L16 P11	20000	400	352	1810	464	400	21204279	3 leaf
SMT 44W/3L-2A-7/17-1810†	SMT 44W3L17 P11	20000	425	377	1810	464	403	21204279	3 leaf
SMT 44W/3L-2A-7/16-1896†	SMT 44W3L16 P12	20340	400	352	1896	549	405	21204279	3 leaf
SMT 44W/3L-2A-7/17-1896†	SMT 44W3L17 P12	20340	425	377	1896	549	408	21204279	3 leaf
SMT 44W/3L-2A-7/16-2045†	SMT 44W3L16 P13	20340	400	352	2045	699	412	21204279	3 leaf
SMT 44W/3L-2A-7/17-2045†	SMT 44W3L17 P13	20340	425	377	2045	699	415	21204279	3 leaf

Three Leaf Underslung



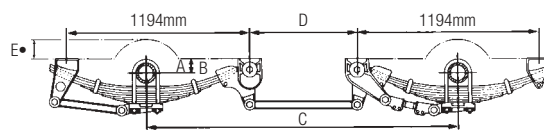
Suspension Type	Suspension Ref.	Capacity kgs	A Unladen mm	B Laden mm	C Approx. mm	D mm	E mm	Weight kgs	Spring Part No.	No. of Leaves
SMT 44W/3L-2A-10AU-1810†	SMT 44W3L4 P11	20000	100	52	1810	464	120	403	21204923	3 leaf
SMT 44W/3L-2A-10AU-1896†	SMT 44W3L4 P12	20340	100	52	1896	549	120	408	21204923	3 leaf
SMT 44W/3L-2A-10AU-2045†	SMT 44W3L4 P13	20340	100	52	2045	699	120	415	21204923	3 leaf

Multi Leaf Standard



Suspension Type	Suspension Ref.	Capacity kgs	A Unladen mm	B Laden mm	C Approx. mm	D mm	Weight kgs	Spring Part No.	No. of Leaves
SMT 44WL-2A-7/16-1810*	SMT 44WL16 P11	20000	400	361	1810	464	420	21200108	7 leaf
SMT 44WL-2A-7/17-1810*	SMT 44WL17 P11	20000	425	386	1810	464	422	21200108	7 leaf
SMT 44WL-2A-7/16-1896*	SMT 44WL16 P12	20340	400	361	1896	549	426	21200108	7 leaf
SMT 44WL-2A-7/17-1896*	SMT 44WL17 P12	20340	425	386	1896	549	428	21200108	7 leaf
SMT 44WHDL-2A-7/17-1810†	SMT 44WHDL17 P11	20000	425	383	1810	464	458	21200078	8 leaf
SMT 44WHDL-2A-7/17-1896†	SMT 44WHDL17 P12	20340	425	383	1896	549	463	21200078	8 leaf
SMT 44WHDL-2A-7/17-2045†	SMT 44WHDL17 P13	20340	425	383	2045	699	470	21200078	8 leaf

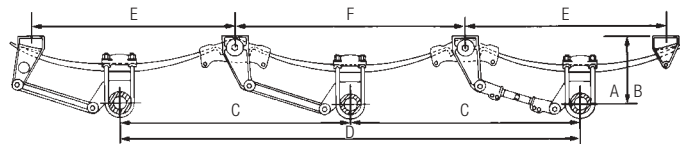
Multi Leaf Underslung



Suspension Type	Suspension Ref.	Capacity kgs	A Unladen mm	B Laden mm	C Approx. mm	D Approx. mm	E mm	Weight kgs	Spring Part No.	No. of Leaves
SMT 44WL-2A-10AU-1810*	SMT 44WL3 P11U	20000	78	39	1810	464	120	421	21200877	7 leaf
SMT 44WL-2A-10AU-1896*	SMT 44WL3 P12U	20340	78	39	1896	549	120	426	21200877	7 leaf
SMT 44WHDL-2A-10AU-1810†	SMT 44WHDL4 P11U	20000	92	50	1810	464	120	457	21200431	8 leaf
SMT 44WHDL-2A-10AU-1896†	SMT 44WHDL4 P12U	20340	92	50	1896	549	120	462	21200431	8 leaf
SMT 44WHDL-2A-10AU-2045†	SMT 44WHDL4 P13U	20340	92	50	2045	699	120	469	21200431	8 leaf

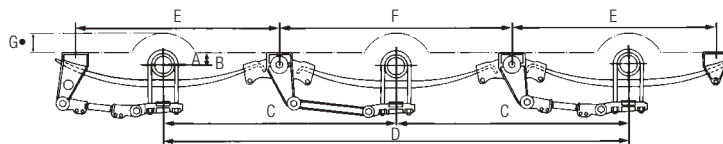
Tri-Axle SMT Suspension

Single Leaf Standard



Suspension Type	Suspension Ref.	Capacity kgs	A Unladen mm	B Laden mm	C Approx. mm	D Approx. mm	E mm	F mm	Weight kgs	Spring Part No.	No. of Leaves
SMT 47S-3A-7/16-1360	SMT47S16 P9	22500	400	382	1360	2720	1194	1390	429	21017788 21021021	1 leaf F & R 1 leaf C
SMT 54S-3A-7/16-1360	SMT54S16 P9	24000	400	382	1360	2720	1194	1360	441	21017560 21200891	1 leaf F & R 1 leaf C
SMT 54S-3A-7/16-1310	SMT54S16 P8	24000	400	375	1310	2620	1144	1310	425	21218360 21218361	1 leaf F & R 1 leaf C

Single Leaf Underslung



Suspension Type	Suspension Ref.	Capacity kgs	A Unladen mm	B Laden mm	C Approx. mm	D Approx. mm	E mm	F mm	G mm	Weight kgs	Spring Part No.	No. of Leaves
SMT 47S-3A-10AU-1360	SMT47S3 P9U	22500	70	52	1360	2720	1194	1390	100	423	21017788 21021021	1 leaf F & R 1 leaf C
SMT 54S-3A-10AU-1360	SMT54S3 P9U	24000	70	52	1360	2720	1194	1360	100	435	21017560 21200891	1 leaf F & R 1 leaf C
SMT 54S-3A-10AU-1310	SMT54S3 P8U	24000	60	35	1310	2620	1144	1310	100	419	21218360 21218361	1 leaf F & R 1 leaf C

† For French Market only. Capacity 21000 kg

* UK Market

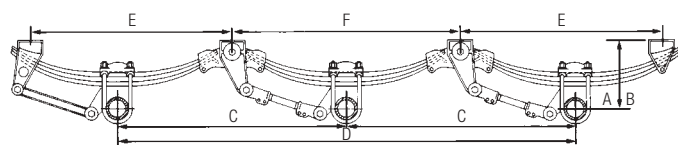
F & R = Front & Rear

C = Centre

• To give required axle clearance under 2g bump condition, trailer builder should provide brackets or alter frame cutouts

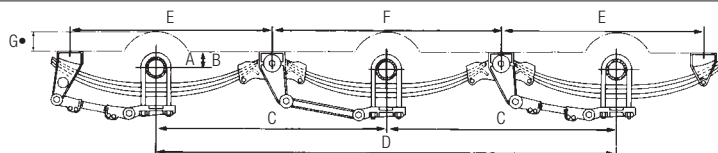
Tri-Axle SMT Suspensions

Two and Three Leaf Standard



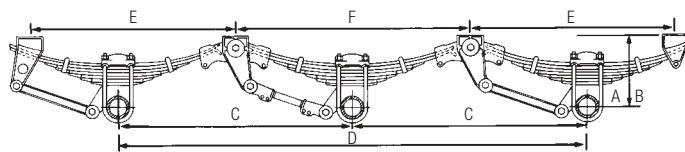
Suspension Type	Suspension Ref.	Capacity kgs	A Unladen mm	B Laden mm	C Approx. mm	D Approx. mm	E mm	F mm	Weight kgs	Spring Part No.	No. of Leaves
SMT 54/2L-3A-7/16-1360	SMT54/2L16 P9	24000	400	365	1360	2720	1194	1360	475	21210822 21210823	2 leaf F & R 2 leaf C
SMT 54/2L-3A-7/16-1310	SMT54/2L16 P8	24000	400	370	1310	2620	1144	1310	448	21214502 21214503	2 leaf F & R 2 leaf C
SMT 54/3L-3A-7/15-1145	SMT54/3L15 P5	24000	381	354	1145	2290	985	1145	467	21215420 21215421	3 leaf F & R 3 leaf C
SMT 54/3L-3A-7/16-1360	SMT54/3L16 P9	24000	400	363	1360	2720	1194	1360	527	21204279 21204921	3 leaf F & R 3 leaf C
SMT 67.5/3L-3A-7/16-1310	SMT67/3L16 P8	30000	400	362	1310	2620	1144	1310	509	21214066 21214067	3 leaf F & R 3 leaf C

Two and Three Leaf Underslung



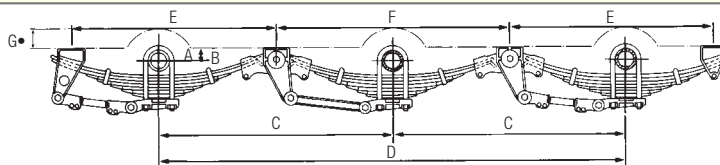
Suspension Type	Suspension Ref.	Capacity kgs	A Unladen mm	B Laden mm	C Approx. mm	D Approx. mm	E mm	F mm	G mm	Weight kgs	Spring Part No.	No. of Leaves
SMT 54/2L-3A-10AU-1360	SMT54/2L4.5 P9U24000	24000	113	79	1360	2720	1194	1360	120	488	21211928 21211929	2 leaf F & R 2 leaf C
SMT 54/2L-3A-10AU-1310	SMT54/2L5 P8U	24000	125	95	1310	2620	1144	1310	120	461	21214578 21214579	2 leaf F & R 2 leaf C
SMT 54/3L-3A-10AU-1145	SMT54/3L2 P5U	24000	52	26	1145	2290	985	1145	120	475	21217432 21217433	3 leaf F & R 3 leaf C
SMT 54/3L-3A-10AU-1360	SMT54/3L4 P9U	24000	100	64	1360	2720	1194	1360	120	534	21204923 21204922	3 leaf F & R 3 leaf C
SMT 67.5/3L-3A-10AU-1310	SMT67/3L4 P8U	30000	100	62	1310	2620	1144	1310	120	515	21214580 21214581	3 leaf F & R 3 leaf C

Multi Leaf Standard



Suspension Type	Suspension Ref.	Capacity kgs	A Unladen mm	B Laden mm	C Approx. mm	D Approx. mm	E mm	F mm	Weight kgs	Spring Part No.	No. of Leaves
SMT 54-3A-7/16-1040	SMT54HD16 P1	24000	400	366	1040	2080	920	1040	516	21019196	8 + 1p F & R
										21019399	8 + 1p C
SMT 54-3A-7/16-1135	SMT54HD16 P4	24000	400	366	1135	2270	922	1200	525	21019196	8 + 1p F & R
										21018612	8 + 1p C
SMT 54L-3A-7/16-1360	SMT54L16 P9	24000	400	358	1360	2720	1194	1360	532	21019750	6 + 1p F & R
										21200996	6 + 1p C
SMT 54HDL-3A-7/16-1360	SMT54HDL16 P9	24000	406	374	1360	2720	1194	1360	550	21200108	7 leaf F & R
										21200997	7 leaf C
SMT 54SHDL-3A-7/17-1360	SMT54SHDL17 P9	24000	425	389	1360	2720	1194	1360	608	21200078	8 leaf F & R
										21200998	8 leaf C
SMT 67.5HDL-3A-7/17-1360	SMT67HDL17 P9	30000	425	381	1360	2720	1194	1360	608	21200078	8 leaf F & R
										21200998	8 leaf C
SMT LL54HD-3A-7/13-1360	SMTLL54HD13 P9	24000	330	300	1360	2720	1194	1360	580	21024589	6 leaf F & R
										21024778	6 leaf C
SMT LL67.5HD-3A-7/13-1360	SMTLL67HD13 P9	30000	343	315	1360	2720	1194	1360	604	21024587	7 leaf F & R
										21024779	7 leaf C
SMT 67.5HD-3A-7/15-1100	SMT67HD15 P3	30480	380	349	1100	2200	950	1100	530	21200067	10 leaf F & R
										21200068	10 leaf C
SMT 67.5HD-3A-7/16-1100	SMT67HD16 P3	30480	405	374	1100	2200	950	1100	533	21200067	10 leaf F & R
										21200068	10 leaf C
SMT 67.5 HD-3A-7/16-1200	SMT67HD16 P6	30000	400	360	1200	2400	1036	1200	558	21212847	8 leaf F & R
										21212848	8 leaf C
SMT 67.5 HD-3A-7/17-1200	SMT67HD17 P6	30000	425	385	1200	2400	1036	1200	563	21212847	8 leaf F & R
										21212848	8 leaf C
SMT 80 HDL-3A-7/17-1360	SMT80HDL17 P9	36000	430	388	1360	2720	1194	1360	682	21203522	10 leaf F & R
										21203636	10 leaf C
SMT 80 HD-3A-7/18-1360	SMT80HD18 P9	36000	450	402	1360	2720	1194	1360	710	21025427	12 leaf F & R
										21202467	12 leaf C

Multi Leaf Underslung



Suspension Type	Suspension Ref.	Capacity kgs	A Unladen mm	B Laden mm	C Approx. mm	D Approx. mm	E mm	F mm	G mm	Weight kgs	Spring Part No.	No. of Leaves
SMT 54L-3A-10AU-1360	SMT54L3 P9U	24000	78	36	1360	2720	1194	1360	120	527	212000586L	6L + 1p F & R
											21209864	6L + 1p C
SMT 54HDL-3A-10AU-1360	SMT54HDL3 P9U	24000	78	46	1360	2720	1194	1360	120	547	21200877	7L F & R
											21202210	7L C
SMT 67.5HDL-3A-10AU-1360	SMT67HDL4 P9U	24000	92	56	1360	2720	1194	1360	120	605	21200431	8L F & R
											21203367	8L C
SMT 80HDL-3A-10AU-1360	SMT80HDL3 P9U	36000	77	29	1360	2720	1194	1360	135	679	21220527	10L F & R
											21220528	10L C
SMT 80HD-3A-10AU-1360	SMT80HD3 P9U	36000	76	34	1360	2720	1194	1360	135	707	21211035	12L F & R
											21211036	12L C

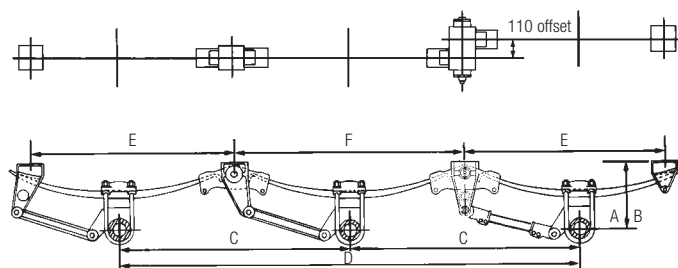
F & R = Front & Rear

C = Centre

• To give required axle clearance under 2g bump condition, trailer builder should provide brackets or alter frame cutouts

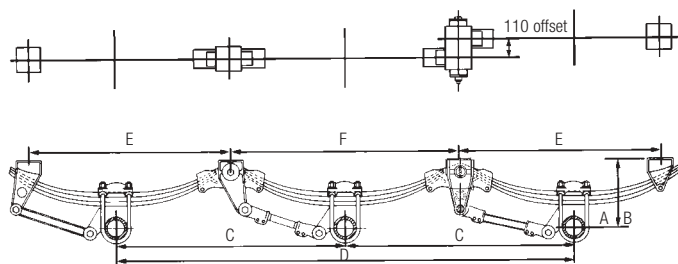
Tri-Axle SMT Suspension Offset Equaliser

Single Leaf



Suspension Type	Suspension Ref.	Capacity kgs	A Unladen mm	B Laden mm	C Approx. mm	D Approx. mm	E mm	F mm	Spring Part No.	No. of Leaves
SMT 47S-3A-7/16.OE-1360	SMT47S16 P9/O	22500	400	382	1360	2720	1194	1360	21017788 21021021	1 leaf F & R 1 leaf C
SMT 54S-3A-7/16.OE-1360	SMT54S16 P9/O	24000	400	382	1360	2720	1194	1360	21017560 21200891	1 leaf F & R 1 leaf C
SMT 54S-3A-7/16.OE-1310	SMT54S16 P8/O	24000	400	375	1310	2620	1144	1310	21218360 21218361	1 leaf F & R 1 leaf C

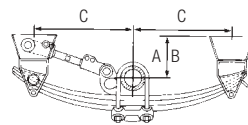
Three Leaf



Suspension Type	Suspension Ref.	Capacity kgs	A Unladen mm	B Laden mm	C Approx. mm	D Approx. mm	E mm	F mm	Spring Part No.	No. of Leaves
SMT 54/3L-3A-7/16.OE-1360	SMT54/3L16 P9/O	24000	400	363	1360	2720	1194	1360	21204279 21204921	3 leaf F & R 3 leaf C
SMT 67.5/3L-3A-7/16.OE-1310	SMT67/3L16 P8/O	30000	400	362	1310	2620	1144	1310	21214066 21214067	3 leaf F & R 3 leaf C

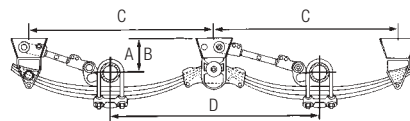
SMT Underslung Range to suite Low Loader Tyres

Single 3 Leaf



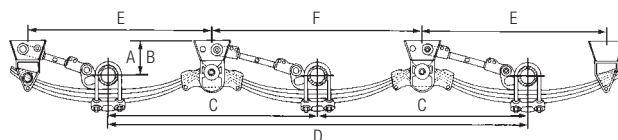
Suspension Type	Suspension Ref.	Capacity kgs	A Unladen mm	B Laden mm	C Approx. mm	Weight kgs	Spring Part No.	No. of Leaves
SMT 22/3L-1A-10US	SMT22/3L 9US	10000	224	176	518	166	21204923	3 leaf

Tandem 3 Leaf



Suspension Type	Suspension Ref.	Capacity kgs	A Unladen mm	B Laden mm	C mm	D Approx. mm	Weight kgs	Spring Part No.	No. of Leaves
SMT 44/3L-2A-10US	SMT44/3L9 P9US	20000	224	176	1194	1360	350	21204923	3 leaf

Tri-Axle 3 Leaf



Suspension Type	Suspension Ref.	Capacity kgs	A Unladen mm	B Laden mm	C Approx. mm	D Approx. mm	E mm	F mm	Weight kgs	Spring Part No.	No. of Leaves
SMT 54/3L-3A-10US	SMT54/3L9 P9US	24000	224	187	1360	2720	1194	1360	534	21204923 21204922	3 leaf F & R 3 leaf C

Torque Arm Centres

The torque arm centres quoted in the tables are for level or normal trailer slopes with a maximum ride height of 451mm on the forward axle. If this ride height is exceeded on the forward axle together with a trailer slope greater than 1° in the unladen condition it will be necessary to increase the centres of the front torque arm. To retain axle centres quoted if no rigid available use adjustable torque arms both sides. This will also retain the leaf spring in its correct position when installed. If in doubt consult MERITOR Product Design Department.

RD = Rigid A = Adj F = Front C = Centre R = Rear I = Intermediate

Single Application

Suspension Series	Centres	Part Number	Suspension Series	Centres	Part Number
STD SMT 16L-1A-7	406 406	RD 21206256 A 19206144	STD SMT 20S, SMT 20L, SMT LL20, SMT 20HDL, SMT 22S, SMT 22L, SMT 22HDL, SMT 22/3L & SMT LL22HD-1A-7, SMT 27HD, SMT 27HDL-1A-7	464 464	RD 21205839 A 19206039
SMT 16/3L-1A-7	360 360	RD 21206142 A 19206146	U/SLUNG SMT 20S, SMT 20L, SMT 20HDL, SMT 22S, SMT 22L, SMT 22HDL, SMT 22/3L, SMT 27HD & SMT 27HDL-1A-10AU	438 438	RD 21206140 A 19206144
U/SLUNG SMT 16L-1-10AU	381 381	RD 21206135 A 19206146	U/SLUNG SPECIAL SMT 22/3L-1A-10US	438 438	RD 21206140 A 19206144
SMT 16/3L-1A-10AU	337 337	RD 21206141 A 19206145			
STD SMT LL17-1A-7	337 337	RD 21206141 A 19206145			

Tandem Application

Suspension Series	Centres	Part Number	Suspension Series	Centres	Part Number
STD SMT 32 SMT 32L-2A-7 (1245 Axle Spread)	406 406	RD 21206256 A 19206144	STD 1200 AXLE SPREAD SMT 44HD-2A-7	381 381	RD 21206135 A 19206146
SMT 32/3L-2A-7 (1145 Axle Spread)	360 360	RD 21206142 A 19206146	U/SLUNG 1360 AXLE SPREAD SMT 36S, SMT 36L, SMT 36HDL, SMT 44S, SMT 44L, SMT 44L/3L, SMT 44HDL-2A-10AU, SMT 50HDL, SMT 60HD & SMT 60HDL-1A-10AU	438 438	RD 21206140 A 19206144
U/SLUNG SMT 32 SMT 32L-2A-10AU (1245 Axle Spread)	381 381	RD 21206135 A 19206146	U/SLUNG SPECIAL 1360 AXLE SPREAD SMT 44/3L-2A-10US	F-438 R-530	RD 21206140 A 19206144 A only 19206143
SMT 32/3L-2A-10AU (1145 Axle Spread)	337 337	RD 21206141 A 19206145	STD 1525 AXLE SPREAD SMT 42L, SMT 42HDL, SMT 42S, SMT 42/3L-2A-7	F-464 R-549	RD 21205839 A 19206039 RD 21206138 A 19206143
STD LL 1080 AXLE SPREAD SMT LL34-2A-7	337 337	RD 21206141 A 19206145	U/SLUNG 1525 AXLE SPREAD SMT 42L, SMT 42HDL, SMT 42S, SMT 42/3L-2A-10AU	F-438 R-508	RD 21206140 A 19206144 A only 19206143
STD 1360 AXLE SPREAD SMT 36S, SMT 36L, SMT LL36, SMT 36HDL, SMT 44S, SMT 44L, SMT 44/3L, SMT 44HDL, SMT LL44HD, SMT 50HDL, SMT 60HD & SMT 60HDL-2A-7	464 464	R 21205839 A 19206039			
STD 1100 AXLE SPREAD SMT 44HD-2A-7	360 360	RD 21206142 A 19206146			

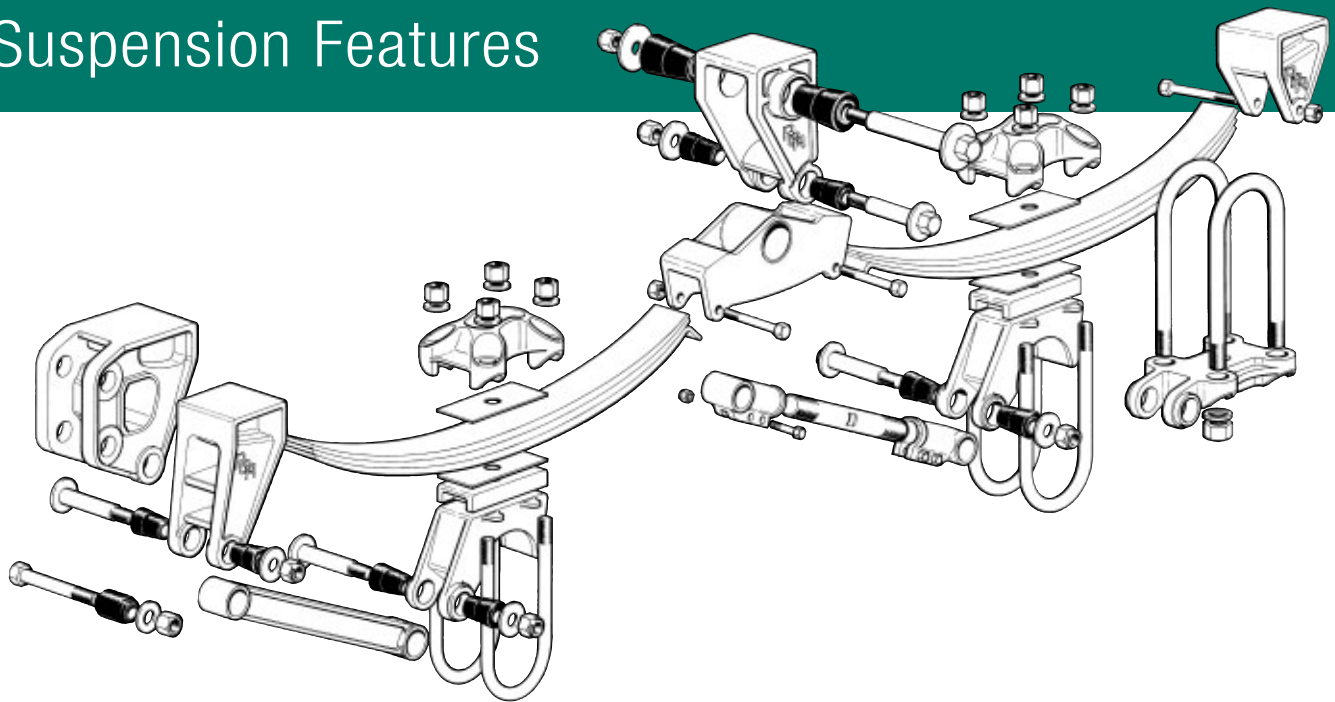
Widespread Tandem

Suspension Series	Centres	Part Number	Suspension Series	Centres	Part Number		
STD 1810 AXLE SPREAD SMT 44WL-2A-7, SMT 44WS-2A-7, SMT 44WHDL-2A-7, SMT 44W/3L-2A-7	F-464 F-464 I-464 R-381 R-381	RD A RD RD A	21205839 19206039 21205839 21206135 19206146	U/SLUNG 1810 AXLE SPREAD SMT 44WL-2A-10AU, SMT 44WS-2A-10AU, SMT 44WHDL-2A-10AU, SMT 44W/3L-2A-10AU	F-438 F-438 I-464 R-337 R-337	RD A R R A	21206140 19206144 21205839 21206141 19206145
STD 1896 AXLE SPREAD SMT 44WL-2A-7, SMT 44WS-2A-7, SMT 44WHDL-2A-7, SMT 44W/3L-2A-7	F-464 F-464 I-549 R-381 R-381	RD A RD RD A	21205839 19206039 21206138 21206135 19206146	U/SLUNG 1896 AXLE SPREAD SMT 44WL-2A-10AU, SMT 44WS-2A-10AU, SMT 44WHDL-2A-10AU, SMT 44W/3L-2A-10AU	F-438 F-438 I-549 R-337 R-337	RD A RD RD A	21206140 19206144 21206138 21206141 19206145
STD 2045 AXLE SPREAD SMT 44WS-2A-7, SMT 44WHDL-2A-7, SMT 44W/3L-2A-7	F-464 F-464 I-699 R-381 R-381	RD A RD RD A	21205839 19206039 21206136 21206135 19206146	U/SLUNG 2045 AXLE SPREAD SMT 44WS-2A-10AU, SMT 44WHDL-2A-10AU, SMT 44W/3L-2A-10AU	F-438 F-438 I-699 R-337 R-337	RD A RD RD A	21206140 19206144 21206136 21206141 19206145

Tri-Axle

Suspension Series	Centres	Part Number	Suspension Series	Centres	Part Number		
STD 1040 AXLE SPREAD SMT 54-3A-7	F-360 F-360 C&R-327	RD A A only	21206142 19206146 19206145	STD 1310 AXLE SPREAD, OFFSET EQUAL SMT 67.5/3L-3A-7/16 OE	F-438 C-438 R-522	RD A RD A A only	21206140 19206144 21206140 19206144 19206143
STD 1100 AXLE SPREAD SMT 67.5HD-3A-7	F-360 F-360 C-337 C-337 R-337 R-337	RD A RD A RD A	21206142 19206146 21206141 19206145 21206141 19206145	U/SLUNG 1310 AXLE SPREAD SMT 54S, SMT 54/2L, SMT 67.5/3L-3A-10AU	F-406 C-406 R-406	RD A RD A	21206256 19206144
STD 1135 AXLE SPREAD SMT 54-3A-7	F-360 F-360 C-406 C-406 R-350	RD A RD A A only	21206142 19206146 21206256 19206144 19206145	STD 1360 AXLE SPREAD SMT 47S, SMT 54S, SMT 54/2L, SMT 54/3L, SMT 54L, SMT 54HDL, SMT 54SHDL, SMT LL54HD, SMT LL67.5HD, SMT 80HD & SMT 80HDL	F-464 C-464 R-464	RD A RD A	21205839 19206039
STD 1145 AXLE SPREAD SMT 54/3L-3A-7	F-360 C-360 R-360	RD A RD A	21206142 19206146	STD 1360 AXLE SPREAD, OFFSET EQUAL SMT 47S, SMT 54S & SMT 54/3L-3A-7/16, OE	F-464 C-464 R-549	RD A RD A A only	21205839 19206039 21205839 19206039 19206143
U/SLUNG 1145 AXLE SPREAD SMT 54/3L-3A-10AU	F-337 C-337 R-337	RD A RD A	21206141 19206145	U/SLUNG 1360 AXLE SPREAD SMT 47S, SMT 54S, SMT 54/2L, SMT 54/3L, SMT 54L, SMT 54HDL, SMT 54SHDL, SMT 80HD & SMT 80HDL-3A-10AU	F-438 C-438	RD A RD A	21206140 19206144
STD 1200 AXLE SPREAD SMT 67.5-3A-7	F-381 C-381 R-381	RD A RD A	21206135 19206146	U/SLUNG SPECIAL 1360 AXLE SPREAD SMT 54/3L-3A-10US	F-438 C-530 R-530	RD A RD A A only	21206140 19206144 19206143 19206143
STD 1310 AXLE SPREAD SMT 54S, SMT 54/2L, SMT 67.5/3L-3A-7	F-438 C-438 R-438	RD A RD A	21206140 19206144				

Suspension Features



Pre-assembled cast steel equaliser has maximum size taper bushes to meet operator requirements of long life and easy replacements. The equaliser also features a single piece forged equaliser bolt.



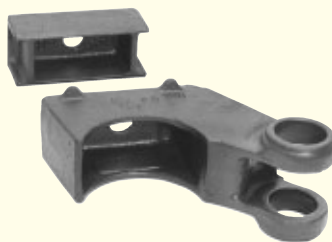
Taper bushes bonded to inner sleeves offer high durability and minimum maintenance.



Slipper ended springs offer varying rates to suit imposed loads – the wide range available includes taper leaf, three leaf parabolic and “Long Life” multi-leaf types to suit all payload requirements.



Cast steel flat top hanger brackets combine strength with lightness and freedom from stress raising corners.

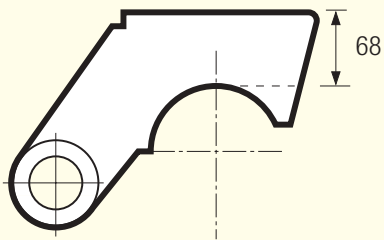


Varying trailer heights can be achieved by use of riser blocks and alternative spring seats.

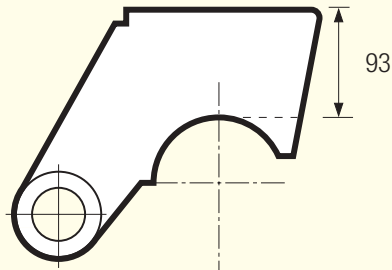


Adjustable torque arms with twin bolt clamping provide for easy axle alignment ensuring minimum tyre wear and increased miles per gallon.

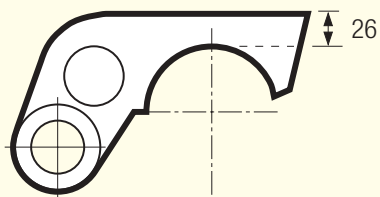
Spring Seat Recognition Chart



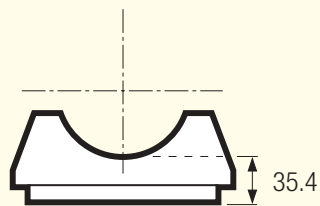
21205838



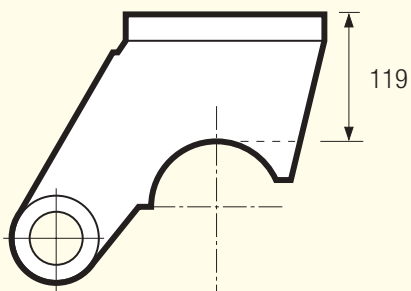
21206070



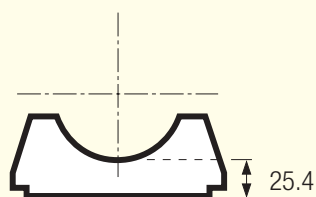
21206071



21201739



21206111



21018673

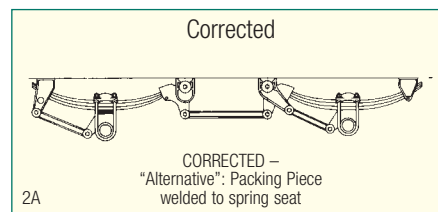
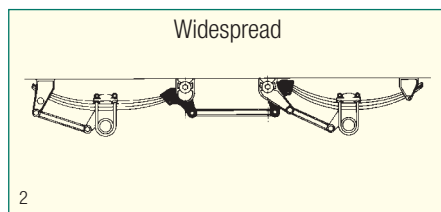
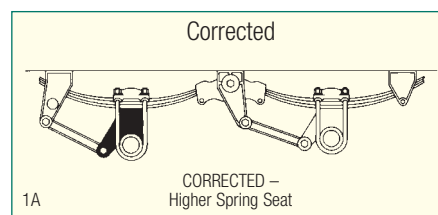
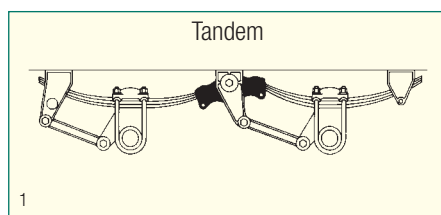
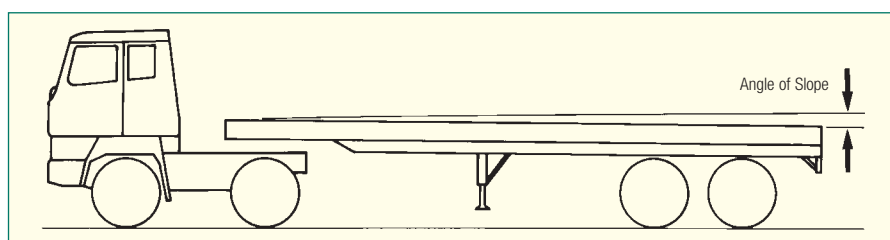
Trailer Slope

Trailer Slope Relative to Spring Heights

When considering the axle and suspension to be specified for a new trailer, always take into account the angle of slope. If this angle is greater than 1 in 100 (1° 35') for tandems, 1 in 150 (0° 23') for wide spread, 1 in 200 (0° 18') tri-axle in the laden condition, the equaliser will have excessive tilt. This tilt will have the effect of reducing the equaliser movement, causing the equaliser to strike the frame under uneven road conditions. This can be overcome by specifying spring seats 25mm (1.0 inch) higher on the forward axle than the seats at the rear or alternatively, by welding packing pieces 25mm thick to the existing spring seats.

Also shown is the same malfunction on a widespread suspension. A packing of appropriate thickness welded in position will correct this.

Alternatively the addition of a suitably tapered spacer between the hanger bracket and the main frame will achieve the same result.



Tri-Axle Performance

Investigations into the performance of trailers fitted with tri-axle suspensions have shown that installation is more critical than for Tandem suspensions. The platform slope in the laden condition, if above the recommended maximum quoted, has apart from reducing equaliser travel, a critical effect on axle loadings.

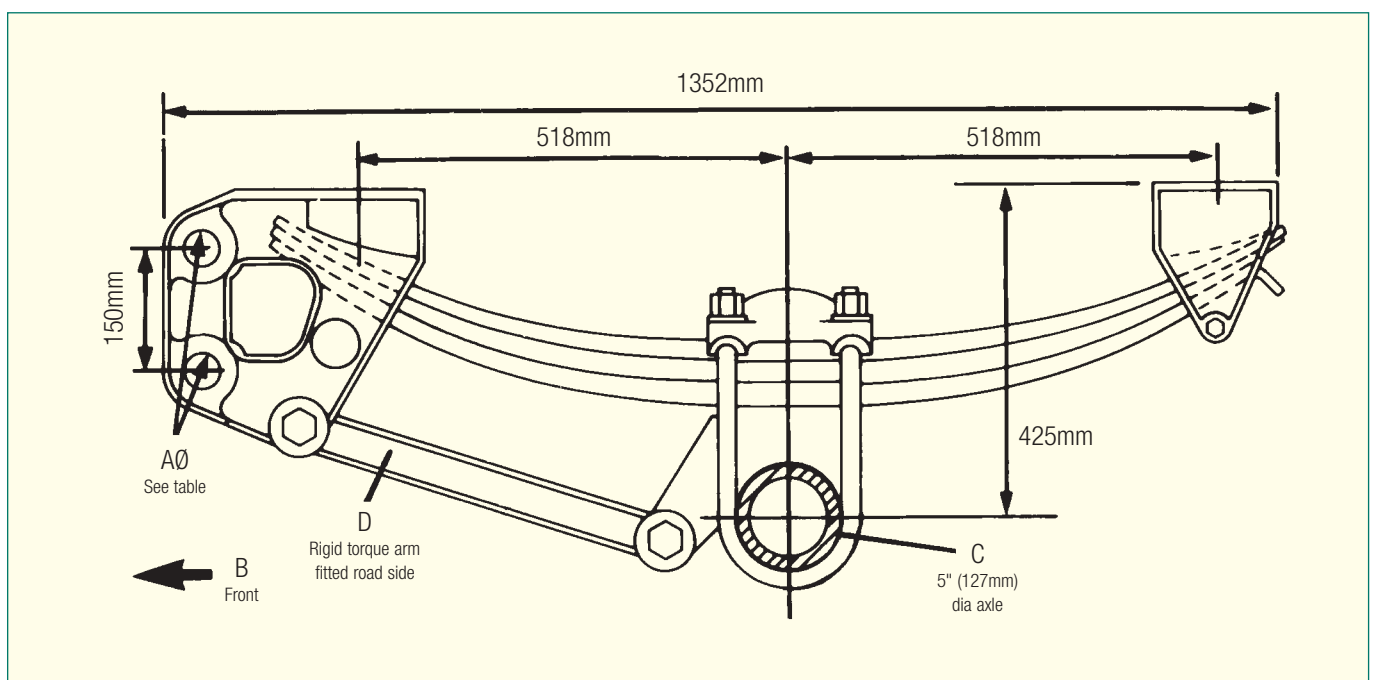
High axle loadings can cause excessive tyre wear or even failure, particularly when cornering. Therefore it is imperative when installing a tri-axle suspension that particular attention should be paid to the laden trailer's slope. If the slope is greater than one in two hundred, the packing pieces must be welded to the spring seats on the front and centre axles; the deepest being fitted to the front axle.

The depth of packing can only be determined by considering each installation individually after judging fifth wheel height, wheel base etc. When a steering axle is required MERITOR Engineering department should be consulted.

The laden ride height of fifth wheel must also be taken into consideration when determining trailer slope. If a variation greater than plus or minus 15mm is expected from the specified slope, a tri-axle suspension will not properly compensate.

The preceding criteria are not applicable to Multi-axle air suspension configurations. For details of mount heights, weights etc please send for MERITOR's air suspension literature and specification.

Towing Brackets



This MERITOR designed and manufactured Combined Spring and Towing Bracket is the ideal unit for towed trailers especially when combined with a MERITOR suspension and axle. The unit is normally supplied complete with single axle suspension. Registered Design No. 945,752.

Towing Bracket Part No.	'A'
21206941	44.1mm \pm .05mm

Springs

Part No.	No. of Leaves	Length mm	Thickness mm	Comments
21017560	Single	1221	41	1360 Axle Spacing
21200891	Single	1198	41	1360 Axle Spacing, Tri-Axle Centre Spring
21017788	Single	1221	38	1360 Axle Spacing
21021021	Single	1198	38	1360 Axle Spacing, Tri-Axle Centre Spring
21214495	Single	1175	38	1310 Axle Spacing, Low Camber
21214496	Single	1170	38	1310 Axle Spacing, Tri-Axle Centre Spring – low camber
21218360	Single	1175	41	1310 Axle Spacing
21218361	Single	1170	41	1310 Axle Spacing, Tri-Axle Centre Spring
21210822	2	1210	65	1360 Axle Spacing
21210823	2	1190	65	1360 Axle Spacing, Tri-Axle Centre Spring
21211928	2	1210	65	1360 Axle Spacing, Underslung
21211929	2	1190	65	1360 Axle Spacing, Tri-Axle Centre Spring, Underslung
21214502	2	1152	59	1310 Axle Spacing
21214503	2	1128	59	1310 Axle Spacing, Tri-Axle Centre Spring
21214578	2	1152	59	1310 Axle Spacing, Underslung
21214579	2	1128	59	1310 Axle Spacing, Tri-Axle Centre Spring, Underslung
21214066	3	1152	78	1310 Axle Spacing
21214067	3	1128	78	1310 Axle Spacing, Tri-Axle Centre Spring
21204279	3	1197	78	1360 Axle Spacing
21204921	3	1175	78	1360 Axle Spacing, Tri-Axle Centre Spring
21204922	3	1175	78	1360 Axle Spacing, Tri-Axle Centre Spring, Underslung
21204923	3	1197	78	1360 Axle Spacing, Underslung
21214580	3	1152	78	1310 Axle Spacing, Underslung
21214581	3	1128	78	1310 Axle Spacing, Tri-Axle Centre Spring, Underslung
21215420	3	1000	69	1145 Axle Spacing
21215421	3	972	69	1145 Axle Spacing, Tri-Axle Centre Spring
21217432	3	1000	69	1145 Axle Spacing, Underslung
21217433	3	972	69	1145 Axle Spacing, Tri-Axle Centre Spring, Underslung
21019961	5 + 2p	1099	100	1245 Axle Spacing
21020425	5 + 2p	1099	100	1245 Axle Spacing, Underslung – convert from 21019961
21020876	5	1099	71	1245 Axle Spacing
21016923	6	1089	102	1265 Axle Spacing, Tri-Axle Centre Spring
21029750	6 + 1p	1210	102	1360 Axle Spacing
21024589	6	1210	90	1360 Axle Spacing, Low Camber
21024778	6	1175	90	1360 Axle Spacing, Tri-Axle Centre Spring – low camber
21200058	6 + 1p	1210	102	1360 Axle Spacing, Underslung – convert from 21019750
21200996	6 + 1p	1175	102	1360 Axle Spacing, Tri-Axle Centre Spring
21209864	6 + 1p	1175	102	1360 Axle Spacing, Tri-Axle Centre Spring, Underslung
21016922	7 + 1p	1108	102	1265 Axle Spacing
21024587	7	1210	109	1360 Axle Spacing – low camber spring
21024779	7	1175	109	1360 Axle Spacing, Tri-Axle Centre Spring – low camber
21200108	7	1210	100	1360 Axle Spacing
21200877	7	1210	100	1360 Axle Spacing, Underslung – convert from 21200108
21200997	7	1175	100	1360 Axle Spacing, Tri-Axle Centre Spring
21202210	7	1175	100	1360 Axle Spacing, Underslung – convert from 21200997
21017128	8	1210	102	1360 Axle Spacing, Underslung – convert from 21017650
21017650	8	1210	102	1360 Axle Spacing
21018612	8	1029	102	1135 Axle Spacing, Tri-Axle Centre Spring
21019196	8 + 1p	927	102	1040/1135 Axle Spacing
21019399	8 + 1p	845	102	1040 Axle Spacing, Tri-Axle Centre Spring
21020068	8 + 1p	927	102	1040/1135 Axle Spacing, Underslung – convert from 21019196
21020069	8 + 1p	845	102	1040 Axle Spacing, Underslung – convert from 21019399
21024734	8	1029	102	1135 Axle Spacing, Underslung – convert from 21018612
21200078	8	1210	114	1360 Axle Spacing
21200431	8	1210	114	1360 Axle Spacing, Underslung – convert from 21200078
21200998	8	1175	114	1360 Axle Spacing, Tri-Axle Centre Spring
21203367	8	1175	114	1360 Axle Spacing, Tri-Axle Centre Spring, Underslung
21212847	8	1045	102	1200 Axle Spacing
21212848	8	1020	102	1200 Axle Spacing, Tri-Axle Centre Spring

Part No.	No. of Leaves	Length mm	Thickness mm	Comments
21017651	9	1210	114	1360 Axle Spacing
21019555	9	1210	114	1360 Axle Spacing, Underslung – convert from 21017651
21023701	9	1175	114	1360 Axle Spacing, Tri-Axle Centre Spring
21201289	9	1210	129	1360 Axle Spacing
21209244	9	1175	129	1360 Axle Spacing, Tri-Axle Centre Spring
21211383	9	1210	129	1360 Axle Spacing, Underslung – convert from 21201289
21017682	10	1210	127	1360 Axle Spacing
21017798	10	1210	127	1360 Axle Spacing, Underslung – convert from 21017682
21200067	10	953	111	1100 Axle Spacing
21200068	10	902	111	1100 Axle Spacing, Tri-Axle Centre Spring
21200284	10	1175	127	1360 Axle Spacing, Tri-Axle Centre Spring
21203522	10	1213	143	1360 Axle Spacing
21220527	10	1213	143	1360 Axle Spacing, Underslung – convert from 21203522
21203636	10	1182	143	1360 Axle Spacing, Tri-Axle Centre Spring
21220528	10	1182	143	1360 Axle Spacing, Underslung – convert from 21203636
21024588	11	933	96	1080 Axle Spacing – low camber spring
21203869	11	889	96	1080 Axle Spacing, Tri-Axle Centre Spring – low camber spring
21203629	11	1213	157	1360 Axle Spacing
21203630	11	1182	157	1360 Axle Spacing, Tri-Axle Centre Spring
21203610	11	1213	157	1360 Axle Spacing, Underslung – convert from 21203629
21203611	11	1182	157	1360 Axle Spacing, Underslung – convert from 21203630
21025427	12	1210	152	1360 Axle Spacing
21211035	12	1210	152	1360 Axle Spacing, Underslung – convert from 21025427
21202467	12	1175	152	1360 Axle Spacing, Tri-Axle Centre Spring
21211036	12	1175	152	1360 Axle Spacing, Underslung – convert from 21202467

Warranty

A comprehensive network of original parts distributors and service stations operate throughout Europe; this is supported internationally with agents strategically placed around the world.

All Meritor replacement parts obtained through original parts distributors are covered by a one year warranty.

For full warranty terms and conditions see 'Meritor Warranty Terms and Conditions' Publication No 4.84.1

Meritor reserve the right to make changes in specifications shown herein or add improvements at any time without notice or obligation.

PARTS SHOWN IN THIS SPARES LIST ARE MADE FROM DRAWINGS IN WHICH COPYRIGHT SUBSISTS. THE MAKING OF COPIES OF ANY OF THESE PARTS IS PROHIBITED.

© Meritor HVS Limited



The high quality assurance management systems applied by Meritor are endorsed with the awarding of ISO 9001, Lloyd's Register Quality Assurance.

ArvinMeritor Inc.

World Headquarters
2135 West Maple Road
Troy, Michigan 48084
U.S.A.
Tel: +1 248 435 1000

Meritor HVS Limited

Commercial Vehicle Systems
Rackery Lane, Llay
Wrexham LL12 0PB
U.K.
Tel: +44 (0)1978 852141
Fax: +44 (0)1978 856173

Meritor HVS (Verona) s.r.l.

Commercial Vehicle Systems
Via Monte Fiorino, 23
37057 San Giovanni Lupatoto, Verona
Italy
Telephone: +39 045 8750399
Fax: +39 045 8750640 / 8750513

Meritor HVS (Barcelona) S.A.

Commercial Vehicle Systems
Ctra. Granollers - Sabadell Km. 13,3
Poligono Argelagues
08185 Lliçà de Vall
Spain
Tel: +34 (9)3 843 95 68
Fax: +34 (9)3 843 83 59

Meritor HVS (Mitry-Mory) S.A.

Commercial Vehicle Systems
Z.I. du Moulin à Vent
9 rue des Frères Lumière
77290 Mitry-Mory
France
Tel: +33 (0)1 64.27.44.61
Fax: +33 (0)1 64.27.30.45

ArvinMeritor

Commercial Vehicle Systems
Postbus 255, 5700AG Helmond
Churchillaan 204A, 5705BK Helmond
The Netherlands
Tel: +31 (0)492 535805
Fax: +31 (0)492 547175

ArvinMeritor South Africa

Commercial Vehicle Systems
Tel: +27 (0) 83 602 1603

www.rorcare.com
www.arvinmeritor.com

ArvinMeritor

Commercial Vehicle Aftermarket AG
Neugutstrasse 89
8600 Dübendorf
Switzerland
Tel: +41 (0)1 824 8200
Fax: +41 (0)1 824 8265

ArvinMeritor

Commercial Vehicle Aftermarket Ltd.
Park Lane, Great Alne, Alcester
Warwickshire B49 6HT
U.K.
Tel: 0845 606 7733
Fax: 0845 606 8844

ArvinMeritor

Commercial Vehicle Aftermarket
Ireland
Tel: +44 1789 768221
The Netherlands
Tel: 0900 202 0348
Belgium

Tel: 078 15 13 72

Luxembourg

Tel: 27302012

France

Tel: 0810 811 267

Spain

Tel: 901 512 214

Portugal

Tel: 808 200881

Italy

Tel: 848 881 078

Germany

Tel: 01801 000402

Austria

Tel: 0810 810041

Scandinavia

Tel: +44 1789 768259

Descriptions and specifications
were in effect at the time of
publication and are subject to
change without notice or liability.
Meritor reserve the right to make
design improvements, change or
discontinue parts at any time.

© Copyright 2004
Meritor Automotive
All rights Reserved

Issued 08-04
Publication 4.07.5



ArvinMeritor™