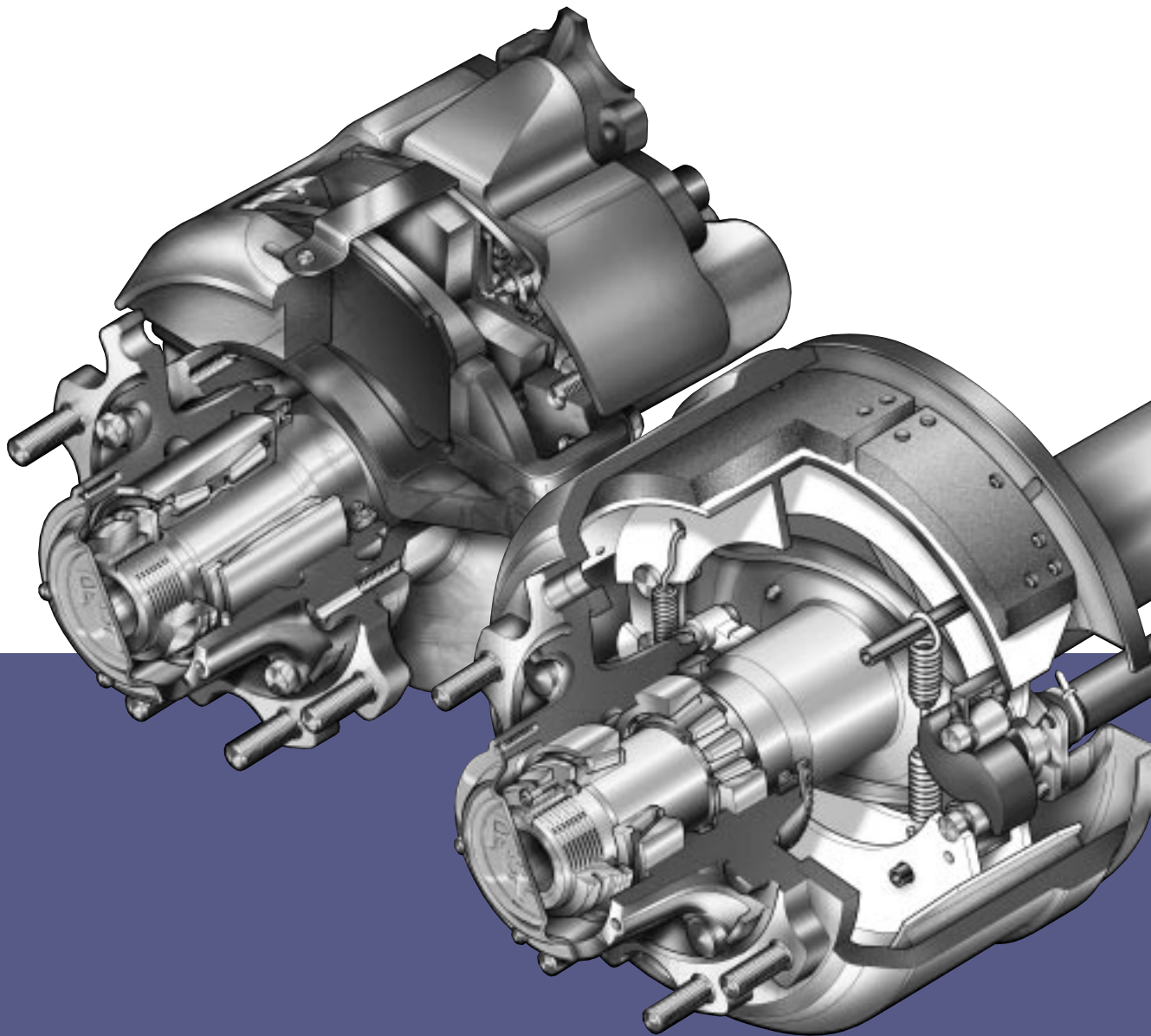




an **ArvinMeritor** brand

Meritor Axle & Brake Parts List

TA and TAC Series Axles including Disc and Drum Brake variants

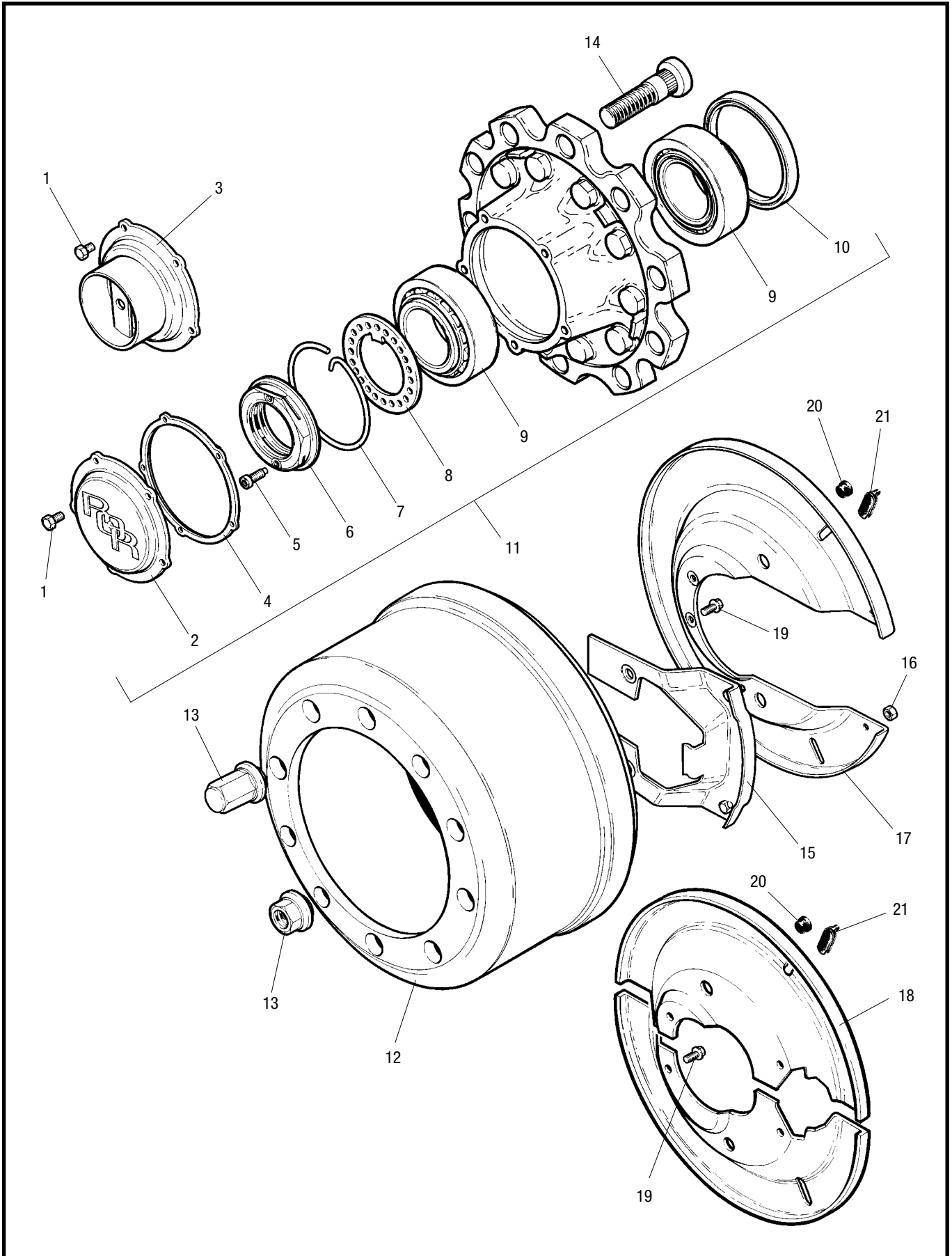


ArvinMeritor™



an ArvinMeritor brand

TA Parts List





an ArvinMeritor brand

TA Parts List

TA Hub Assembly Parts List

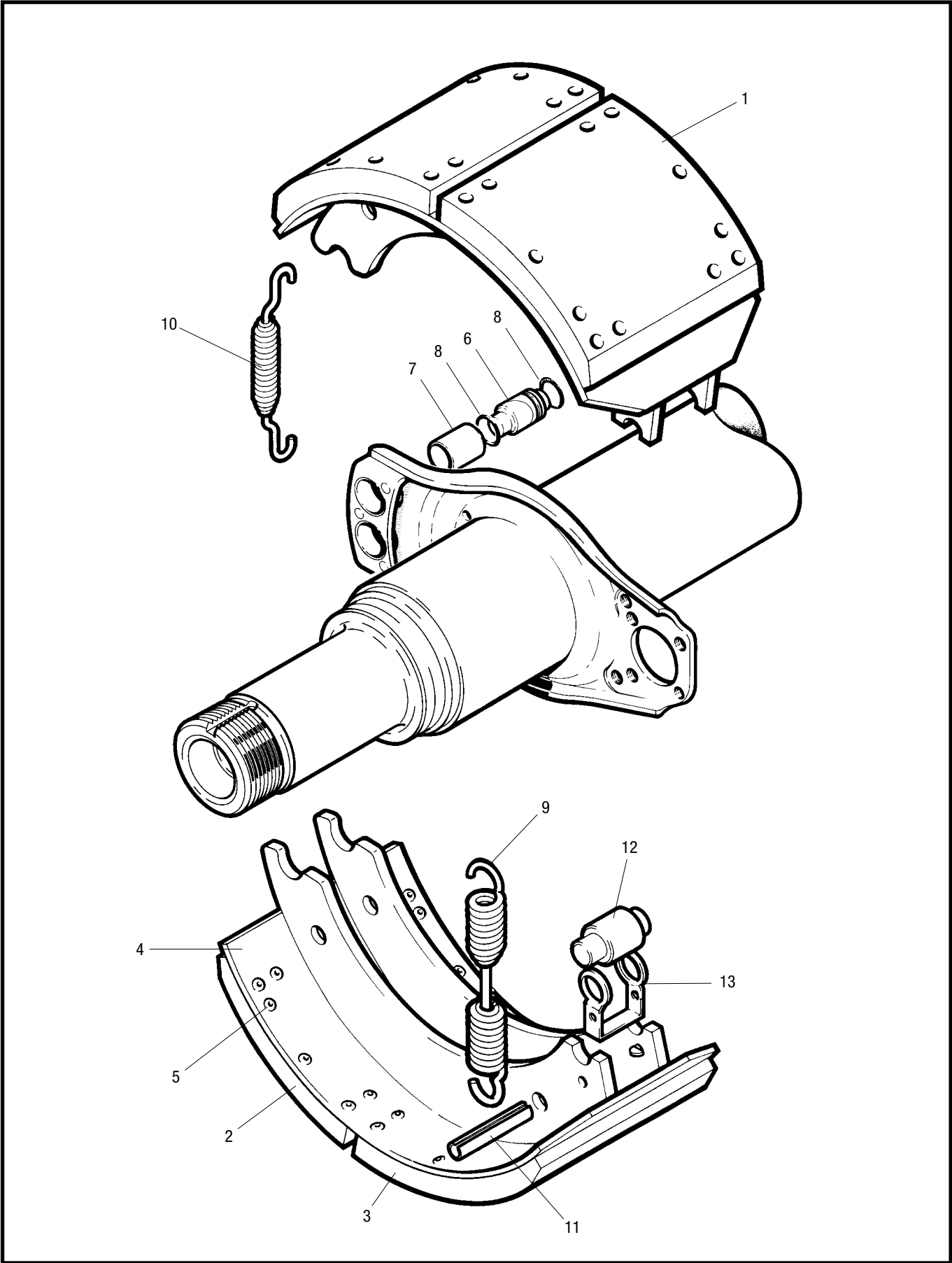
Item	Description	Part Number
1	Screw, Hub Cap	99543001
2	Hub Cap	21226038
3	Hub Cap – Hubodometer	21226118
4	Gasket, Hub Cap	21226119
5	Screw, Pinch Nut	21224864
6	Pinch Nut	21226003
7	Retaining Clip	21226117
8	Retaining Washer	21226090
9	Bearing, Inner & Outer	99041035
10	Oil Seal	21200321A
11	Hub Assembly, Separate Bearing, Twin & Single Wheel	14226120
12	Brake Drum, 420 x 180 'Q'	21018986
12	Brake Drum, 420 x 220 'Z'	21021114A
13	Wheel Nut	see table below
14	Wheel Bolt, Steel Single Wheel	21022167
14	Wheel Bolt, Steel Twin Wheel, Aluminium Single Wheel	21020997
14	Wheel Bolt, Aluminium Twin Wheel	21206355
15	Filler Plate, Dust Cover, 420 x 180 'Q' Brake only	15224518
15	Filler Plate, Dust Cover, 420 x 180 'Q' Brake only, after April 2001	15225842
16	Nut, Filler Plate, Dust Cover, 420 x 180 'Q' Brake only	99544000
17	Dust Cover, 420 x 180 'Q' Brake only	21224522
18	Dust Cover Pair, 420 x 220 'Z' Brake only	21221567/8
19	Screw, Dust Cover, 'Q' & 'Z'	99546002
20	Plug, Blanking, 'Q' & 'Z'	21211385
21	Plug, Inspection, 'Q' & 'Z'	21220719
22	400g Cartridge MERITOR Hub Grease (not shown)	99538007
23	100g Tube Optimol Optimoly White Paste T (not shown)	99538009

WHEEL NUTS 32mm ACROSS FLATS		
NEW PART NUMBER	TYPE	FINISH COATING
21226395	STANDARD OPEN	PHOSPHATE & OIL
21226396	STANDARD OPEN	DACROMET 500 & OIL
21226397	CLOSED END	PHOSPHATE & OIL
21226484	CLOSED END	DACROMET 500 & OIL



an ArvinMeritor brand

TA Parts List





an ArvinMeritor brand

TA Parts List

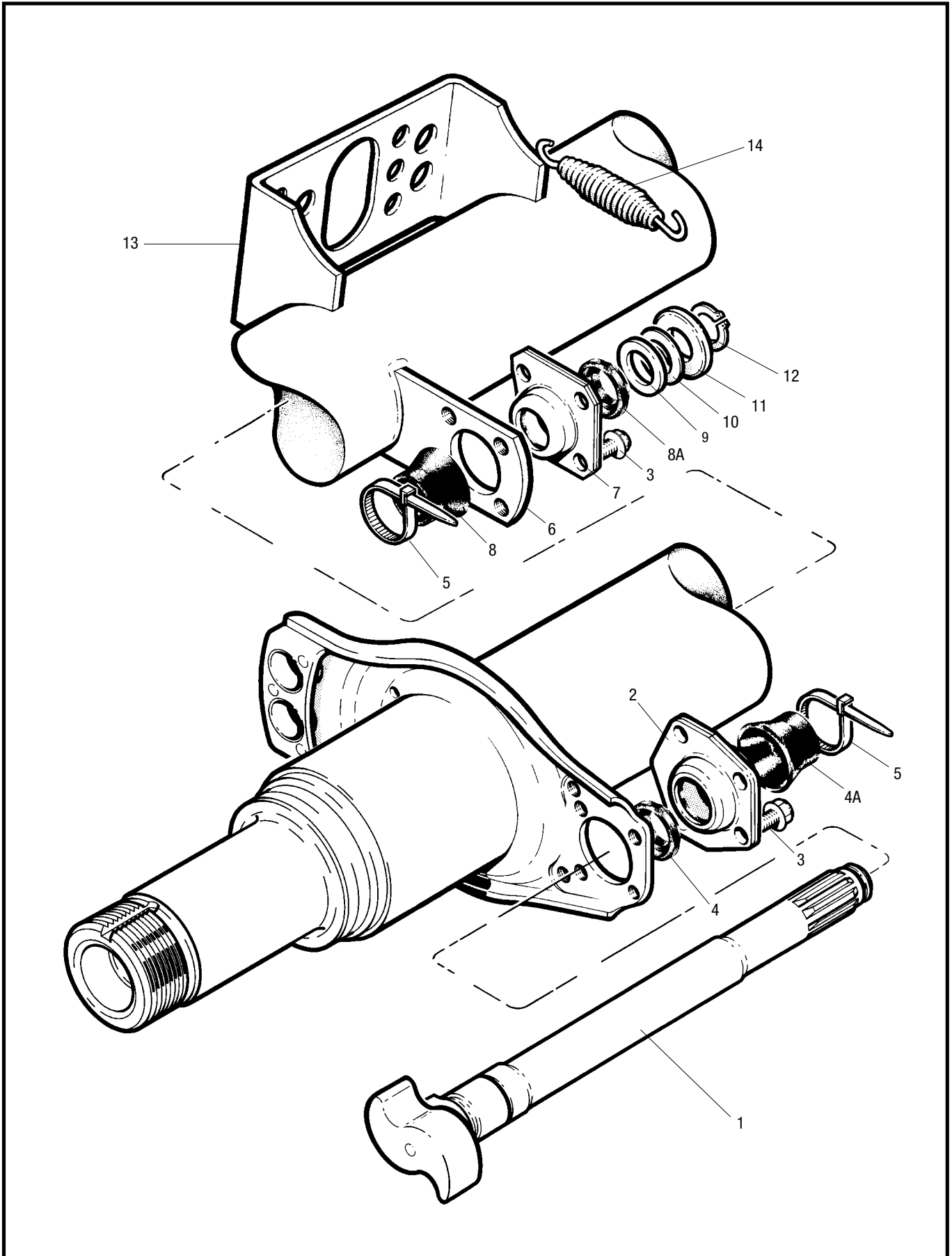
TA Brake Assembly Parts List

Item	Description	'Q' 420 x 180	'Z' 420 x 220
1	Brake Shoe Lined Assembly	15205536R	15205192R
2	Brake Lining, Anchor End	21200790R	21200794R
3	Brake Lining, Cam End	21200791R	21200795R
4	Brake Shoe Unlined	15205533	15205191
5	Rivet	21200761	21200761
6	Anchor Pin	21205193G	21205193G
7	Bush, Anchor Pin	21221028	21221028
8	'O' Ring, Anchor Pin	21220668	21220668
9	Release Spring	21221224	21221224
10	Retainer Spring	21205194	21205194
11	Pin	21220171	21220171
12	Cam Roller	21006610	21006610
13	Roller Retaining Clip	21224831	21224831



an ArvinMeritor brand

TA Parts List





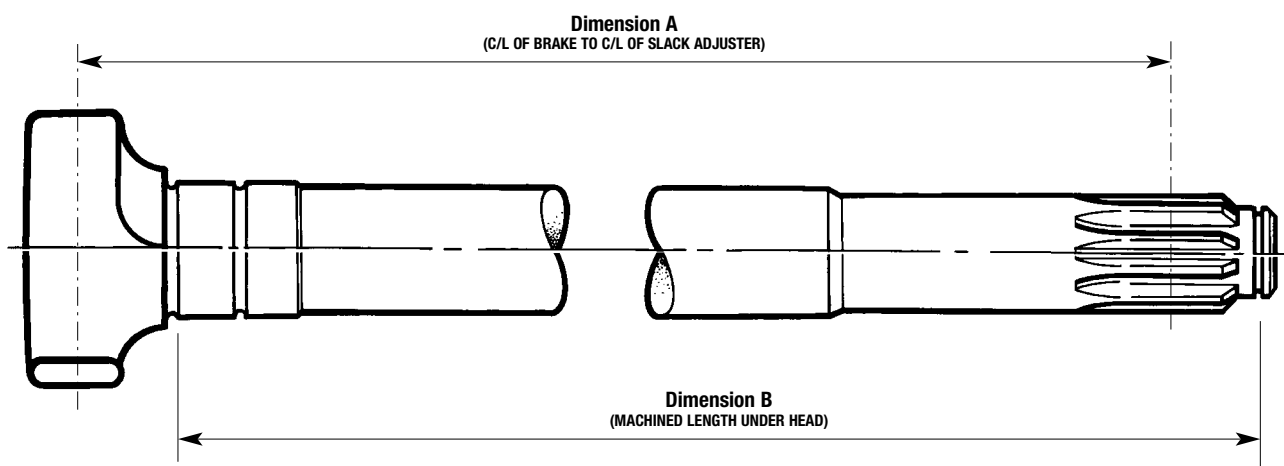
an ArvinMeritor brand

TA Parts List

TA Camshaft Assembly Parts List – up to Jan 2001

Item	Description	Part Number
1	Camshaft LH/RH	See table below
2	Cam Head Bearing Assembly	15224821
3	Screw, Bearing	99535001
4	Outer Boot, Cam End	21224729
4A	Inner Boot, Cam End	21224730
5	Tie Wrap	21221065
6	Camshaft Bracket (axles built after Sept '99)	21020300
7	Spline End Bearing Assembly	15213430
8	Inner Boot, Spline End	21204849
8A	Outer Boot, Spline End	21205667
9	Washer, Spacing, Thick	21006627
10	Washer, Spacing, Thin	21006662
11	Retaining Washer	21219862
12	Circlip	99507030
13	Air Chamber Bracket	21201592
14	Assister Spring	21210215
*15	25g Sachet MERITOR Grease (not shown)	99226786

*NB. Item 15 must be used on items 2 & 7.

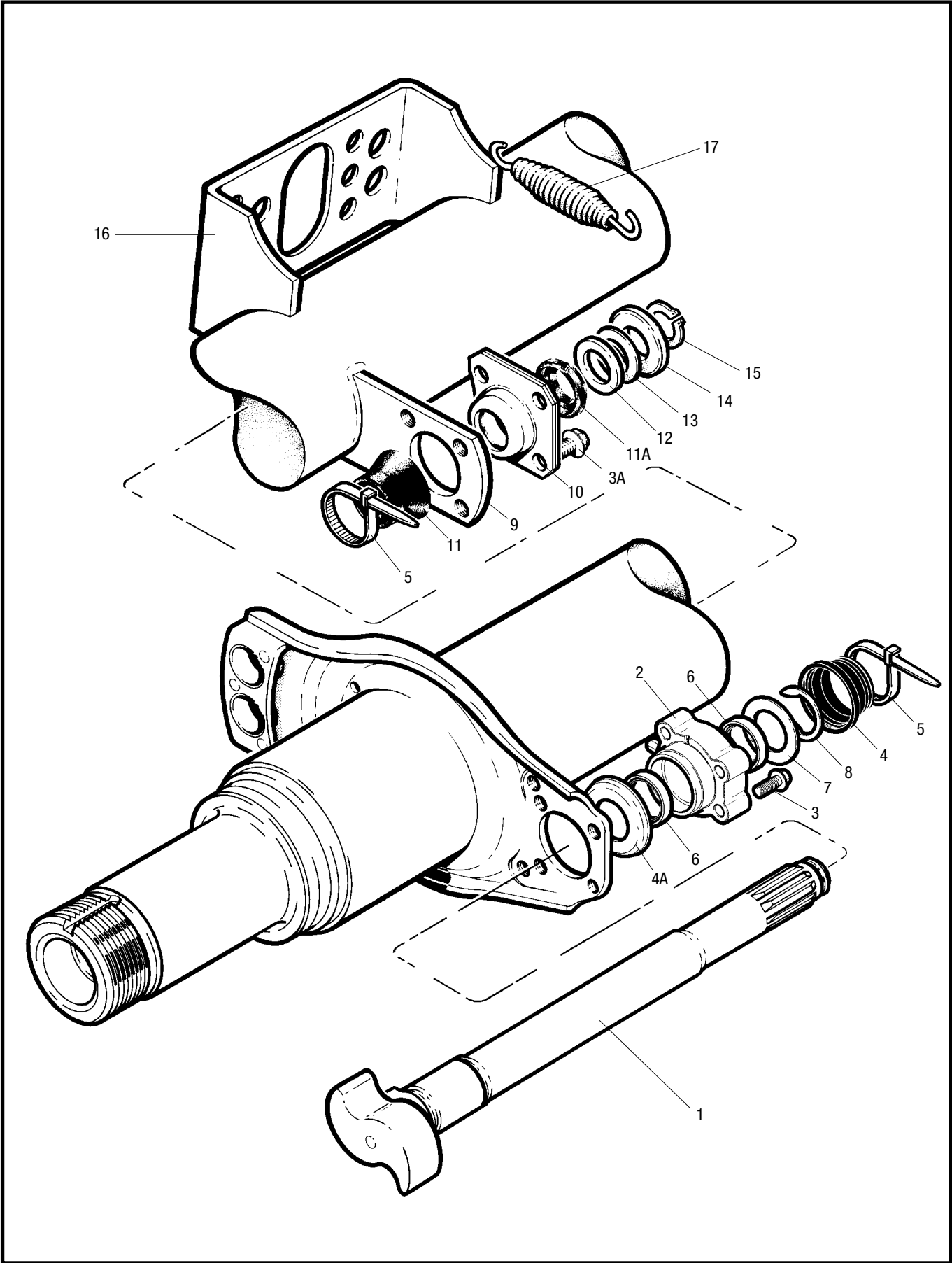


Dimension 'A'	Dimension 'B'	Part Number	
		Right Hand	Left Hand
229.9	232.4	21223154	21223155
253.5	258.0	21222949	21222950
412.2	416.7	21222183	21222184
475.7	480.2	21222185	21222186
521.0	525.5	21221070	21221071
544.5	549.0	21222700	21222701
564.0	568.5	21222386	21222387
583.0	587.5	21221194	21221195
605.5	610.0	21222187	21222188
622.5	627.0	21222189	21222190
632.5	637.0	21222191	21222192



an ArvinMeritor brand

TA Parts List





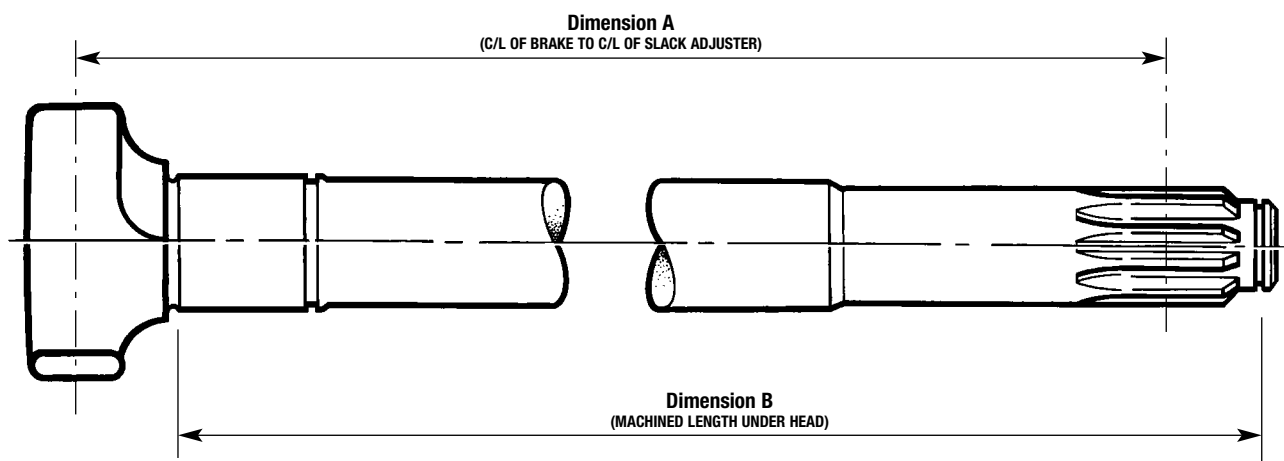
an ArvinMeritor brand

TA Parts List

TA Camshaft Assembly Parts List – from Feb 2001

Item	Description	Part Number
1	Camshaft LH/RH	See table below
2	Cam Head Bearing Assembly	A23105Q1213
3	Screw, Bearing, Cam End	99546000
3A	Screw, Bearing, Spline End	99546001
4	Washer Seal	1229K4795
4A	Boot, Cam End	2260K1155
5	Tie Wrap	21221065
6	Lip Seal	A1205S2645
7	Washer	1229S4101
8	Snap Ring	1229T4102
9	Camshaft Bracket	21020300
10	Spline End Bearing Assembly	15213430
11	Inner Boot, Spline End	21204849
11A	Outer Boot, Spline End	21205667
12	Washer, Spacing, Thick	21006627
13	Washer, Spacing, Thin	21006662
14	Retaining Washer	21219862
15	Circlip	99507030
16	Air Chamber Bracket	21201592
17	Assister Spring	21210215
*18	25g Sachet MERITOR Grease (not shown)	99226786

*NB. Item 18 must be used on items 2 & 10.

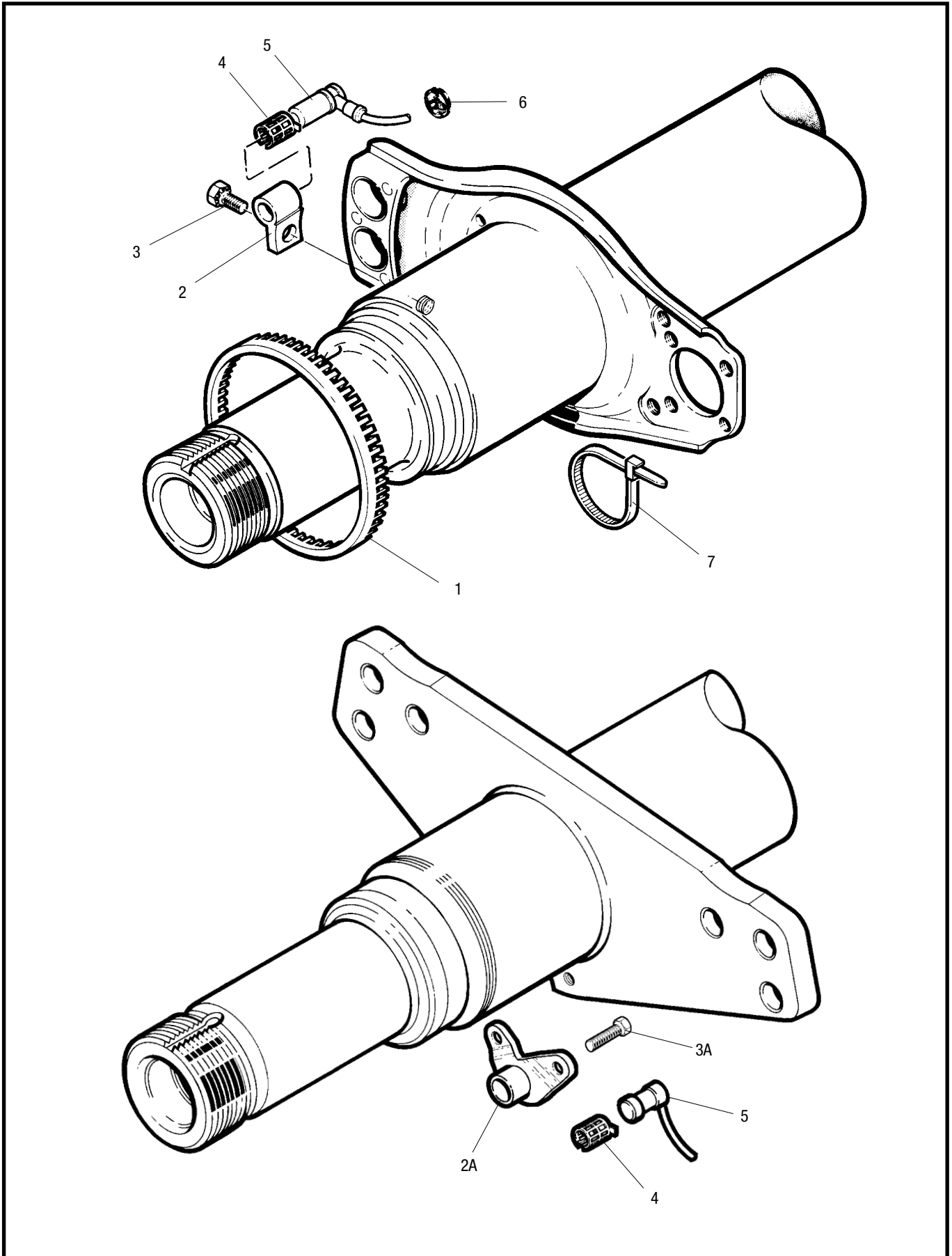


Dimension 'A'	Dimension 'B'	Part Number	
		Right Hand	Left Hand
229.9	232.4	21227113	21227114
412.2	416.7	21227111	21227112
521.0	525.5	21227109	21227110
583.0	587.5	21227107	21227108
605.5	610.0	21227105	21227106
622.5	627.0	21227103	21227104
632.5	637.0	21227101	21227102



an ArvinMeritor brand

TA Parts List





an ArvinMeritor brand

TA Parts List

TA Anti-Lock Assembly Parts List

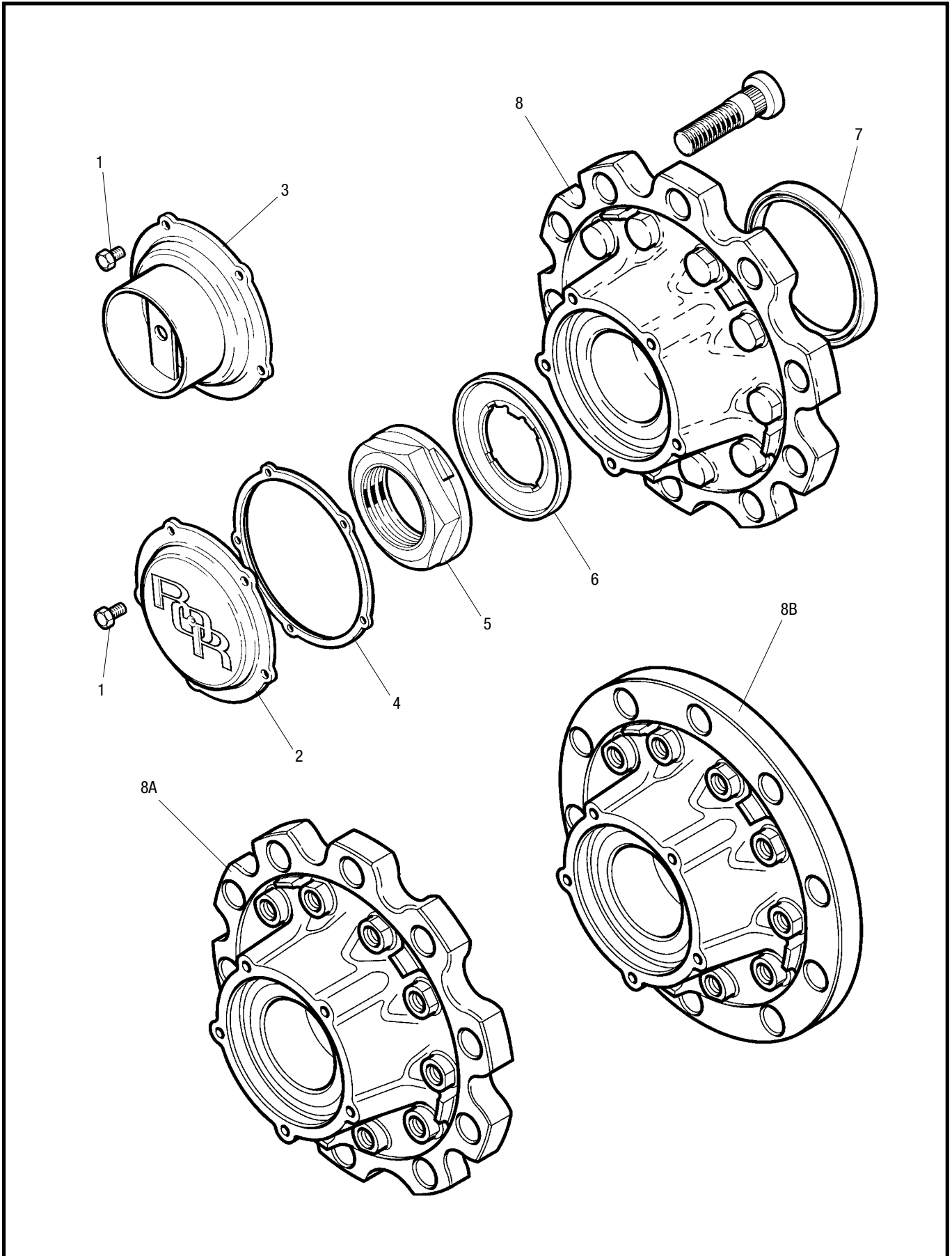
Item	Description	Part Number
1	Pole Wheel, Drum Brake only*	21213316
2	Sensor Block, Drum Brake only	22224705
2A	Sensor Bracket, Disc Brake only	21226355
3	Screw, Sensor Block, Drum Brake only	99541002
3A	Screw, Sensor Bracket, Disc Brake only	99543002
4	Spring Clip	21213036
5	Sensor	21213034
6	Strain Relief Bush, Drum Brake only	21222319
7	Cable Tie	21221065
8	Grease for Sensor Bush (not shown)	99226786

*For Disc Brake the ABS Pole Wheel is integral to the rotor.



an ArvinMeritor brand

TAC Parts List





an ArvinMeritor brand

TAC Parts List

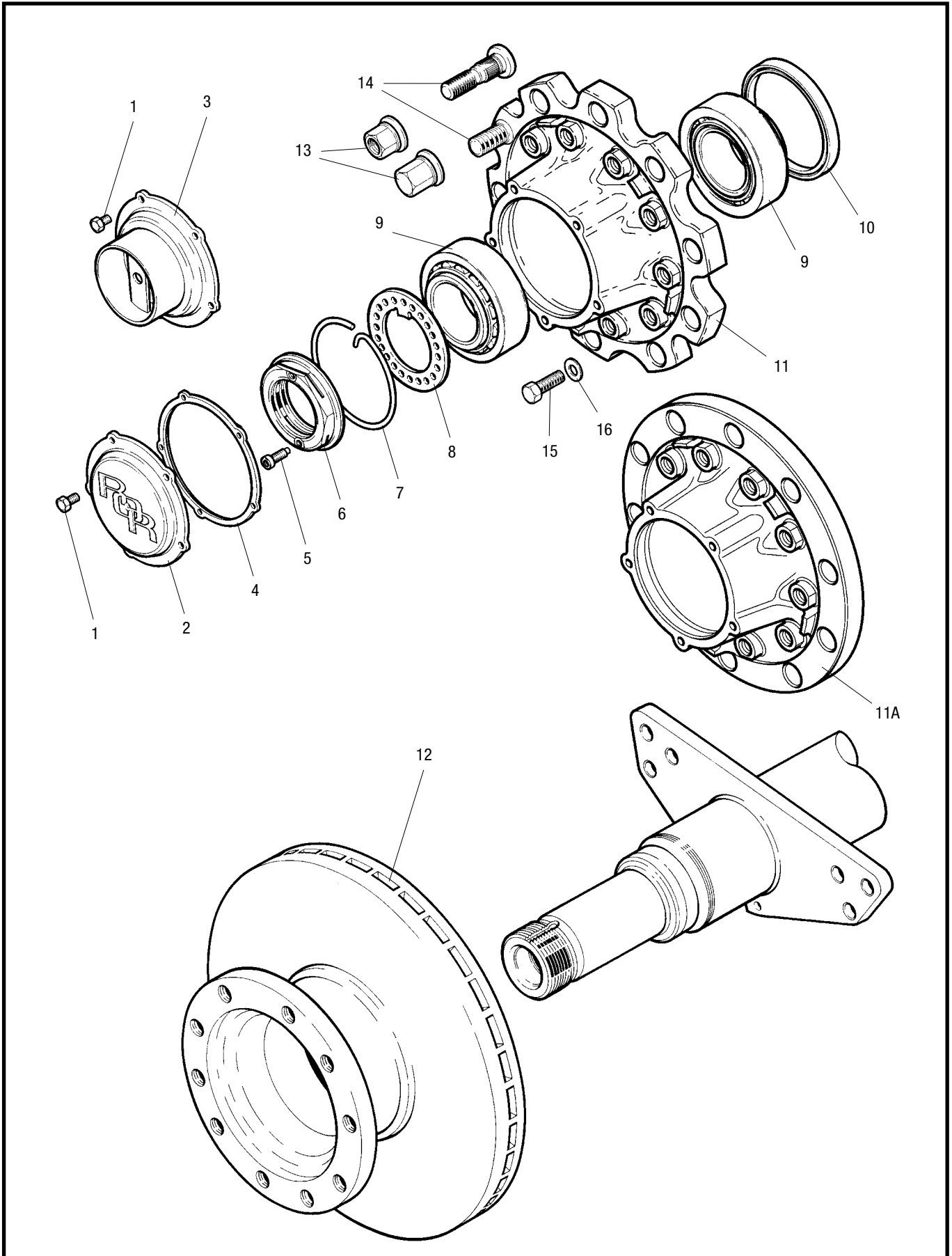
TAC Hub Assembly Parts List

Item	Description	Part Number
1	Screw, Hub Cap	99543001
2	Hub Cap	21226038
3	Hub Cap, Hubodometer	21226118
4	Gasket, Hub Cap	21226119
5	Axle End Nut	21226032
6	Stake Washer Assembly	21226088
7	Auxiliary Oil Seal	21200321A
8	Hub Assembly, Drum Brake, Single & Twin Wheel	14226122
8A	Hub Assembly, Disc Brake, Twin Wheel only	14226123
8B	Hub Assembly, Disc Brake, Single Wheel only	14226493



an ArvinMeritor brand

TA D Duco Parts List





an ArvinMeritor brand

TA D Duco Parts List

TA D Duco Hub, Rotor and ABS Parts List

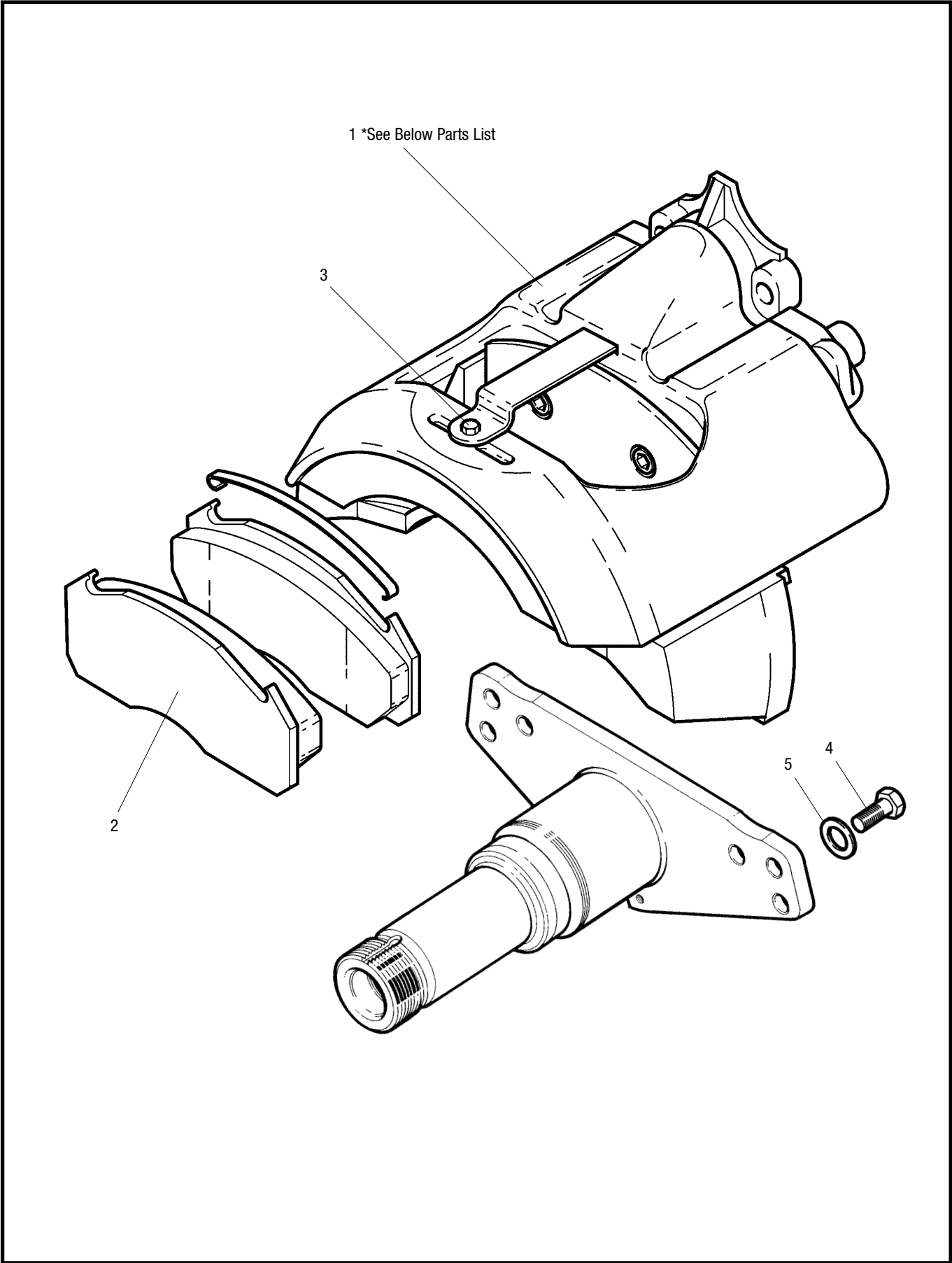
Item	Description	Part Number
1	Screw, Hub Cap	99543001
2	Hub Cap	21226038
3	Hub Cap, Hubodometer	21226118
4	Gasket, Hub Cap	21226119
5	Screw, Pinch Nut	21224864
6	Pinch Nut	21226003
7	Retaining Clip	21226117
8	Retaining Washer	21226090
9	Bearing, Inner & Outer	99041035
10	Oil Seal	21200321A
11	Hub Assembly, Disc Brake, Separate Bearing, Twin Wheel only	14226121
11A	Hub Assembly, Disc Brake, Separate Bearing, Single Wheel only	14226492
12	Rotor	68323825
13	Wheel Nut	see table below
14	Wheel Bolt, Steel Single & Twin Wheel	21226690
14	Wheel Bolt, Aluminium, Single Wheel	21226705
14	Wheel Bolt, Aluminium, Twin Wheel	21226691
15	M16 x 65 Rotor Mounting Bolt	21225100
16	Hardened Washer	21224978

WHEEL NUTS 32mm ACROSS FLATS		
NEW PART NUMBER	TYPE	FINISH COATING
21226395	STANDARD OPEN	PHOSPHATE & OIL
21226396	STANDARD OPEN	DACROMET 500 & OIL
21226397	CLOSED END	PHOSPHATE & OIL
21226484	CLOSED END	DACROMET 500 & OIL



an ArvinMeritor brand

D Duco Parts List





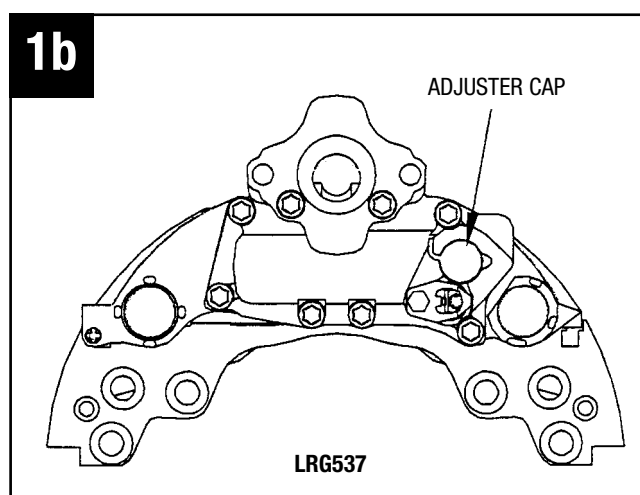
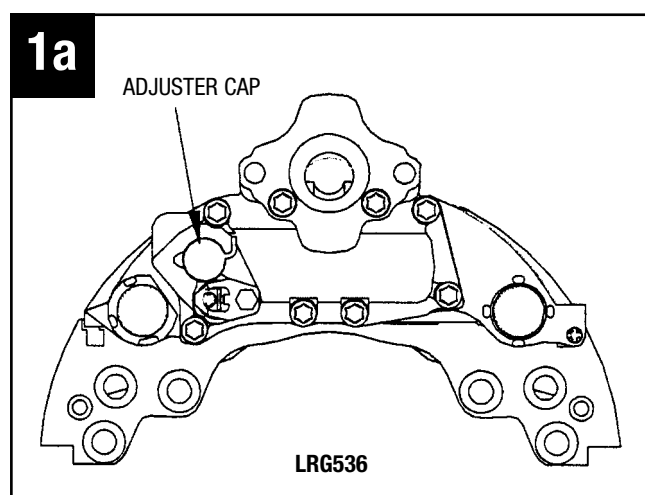
an ArvinMeritor brand

D Duco Parts List

D Duco Brake Assembly Parts List

Item	Description	Part Number
1a	Brake Assembly D Duco (Service Exchange)*	LRG536
1b	Brake Assembly D Duco (Service Exchange)*	LRG537
2	Disc Pad Kit	MDP 5057
3	Retaining Bolt	68130034
4	M20 x 50 Caliper Mounting Bolt	21226651
5	Hardened Washer	21226568

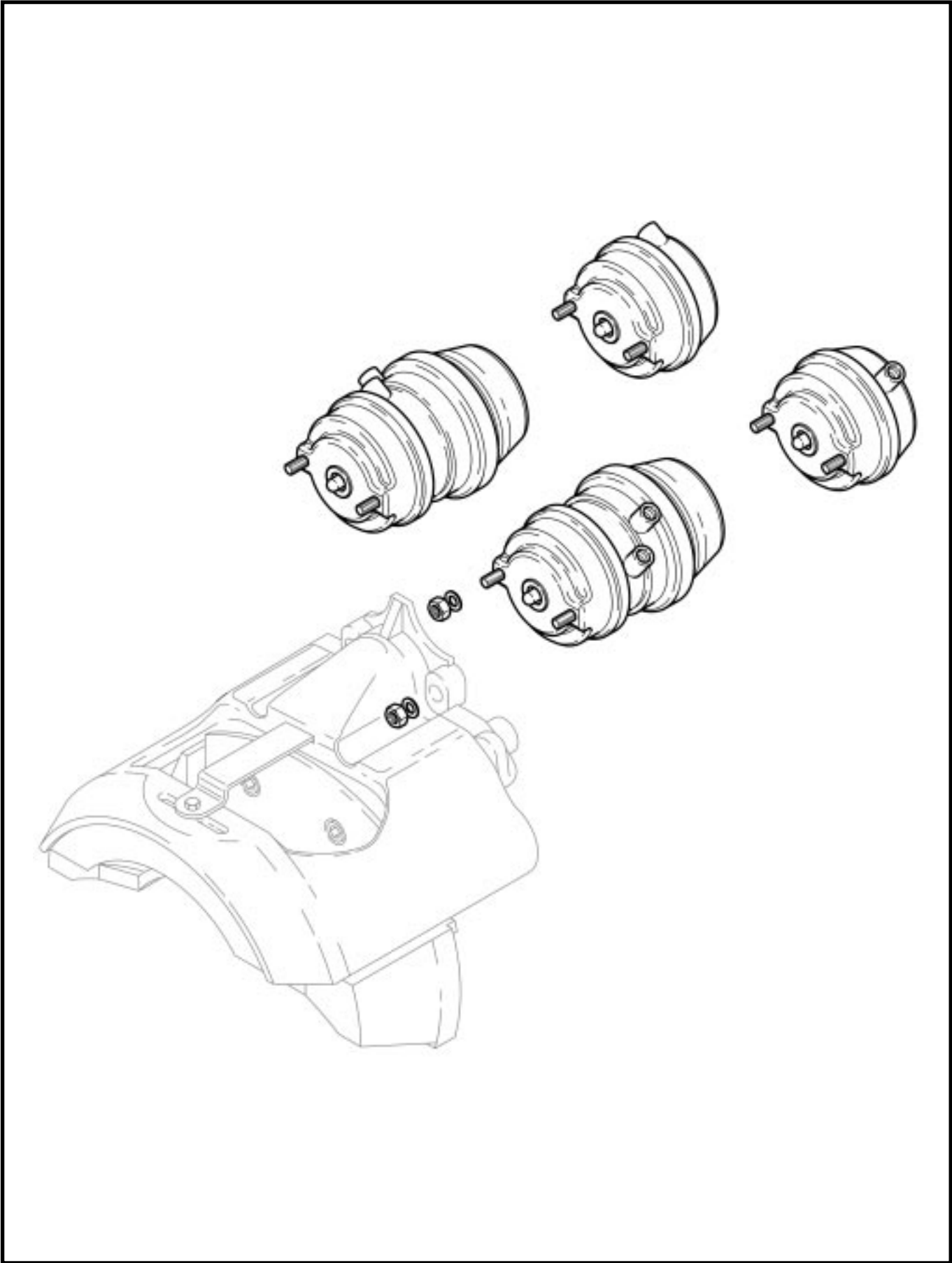
* Brake Assembly Rear View – for identification





an ArvinMeritor brand

D Duco Parts List





an ArvinMeritor brand

D Duco Parts List

D Duco Air Chambers Parts List

Underslung Suspensions

FL11000

Chamber Size	Left Hand Side of Axle		Right Hand Side of Axle	
	Chamber Part No.	Caliper Part No.	Chamber Part No.	Caliper Part No.
14 Service	41226793	68032959	41226792	68032960
14/16	41226795	68032959	41226794	68032960
14/24	41226797	68032959	41226796	68032960
16 Service	41226799	68032959	41226798	68032960
16/16	41226801	68032959	41226800	68032960
16/24	41226803	68032959	41226802	68032960
18 Service	41226805	68032959	41226804	68032960
18/24	41226807	68032959	41226806	68032960
20 Service	41226809	68032959	41226808	68032960
20/24	41226811	68032959	41226810	68032960
22 Service	41226813	68032959	41226812	68032960
22/24	41226815	68032959	41226814	68032960
24 Service	41226817	68032959	41226816	68032960
24/24	41226819	68032959	41226818	68032960
24/30	41226821	68032959	41226820	68032960
27 Service	41226823	68032959	41226822	68032960
27/30	41226825	68032959	41226824	68032960
30/30	41226827	68032959	41226826	68032960

Overslung Suspensions

FL9000, FL9000NB, FL11000B

Chamber Size	Left Hand Side of Axle		Right Hand Side of Axle	
	Chamber Part No.	Caliper Part No.	Chamber Part No.	Caliper Part No.
14 Service	41226792	68032959	41226793	68032960
14/16	41226794	68032959	41226795	68032960
14/24	41226796	68032959	41226797	68032960
16 Service	41226798	68032959	41226799	68032960
16/16	41226800	68032959	41226801	68032960
16/24	41226802	68032959	41226803	68032960
18 Service	41226804	68032959	41226805	68032960
18/24	41226806	68032959	41226807	68032960
20 Service	41226808	68032959	41226809	68032960
20/24	41226810	68032959	41226811	68032960
22 Service	41226812	68032959	41226813	68032960
22/24	41226814	68032959	41226815	68032960
24 Service	41226816	68032959	41226817	68032960
24/24	41226818	68032959	41226819	68032960
24/30	41226820	68032959	41226821	68032960
27 Service	41226822	68032959	41226823	68032960
27/30	41226824	68032959	41226825	68032960
30/30	41226826	68032959	41226827	68032960

Warranty

A comprehensive network of original parts distributors and service stations operate throughout Europe; this is supported internationally with agents strategically placed around the world.

All Meritor replacement parts obtained through original parts distributors are covered by a one year warranty.

For full warranty terms and conditions see 'Meritor Warranty Terms and Conditions' Publication No 4.84.1

Meritor reserve the right to make changes in specifications shown herein or add improvements at any time without notice or obligation.

PARTS SHOWN IN THIS SPARES LIST ARE MADE FROM DRAWINGS IN WHICH COPYRIGHT SUBSISTS. THE MAKING OF COPIES OF ANY OF THESE PARTS IS PROHIBITED.

© Meritor HVS Limited



The high quality assurance management systems applied by Meritor are endorsed with the awarding of ISO 9001, Lloyd's Register Quality Assurance.



an **ArvinMeritor** brand



an **ArvinMeritor** brand



an **ArvinMeritor** brand

Meritor HVS Limited
Commercial Vehicle Systems
Rackery Lane, Llay
Wrexham LL12 0PB
U.K.
Telephone: +44 (0)1978 852141
Fax: +44 (0)1978 856173

Meritor HVS (Mitry-Mory) S.A.
Commercial Vehicle Systems
Z.I. du Moulin à Vent
9 rue des Frères Lumière
77290 Mitry-Mory
France
Telephone: +33 (0)1 64.27.44.61
Fax: +33 (0)1 64.27.30.45

Meritor HVS (Verona) s.r.l.
Commercial Vehicle Systems
Via Monte Fiorino, 23
37057 San Giovanni Lupatoto
Verona
Italy
Telephone: +39 045 8750399
Fax: +39 045 8750640 / 8750513

Meritor HVS (Barcelona) S.A.
Commercial Vehicle Systems
Ctra. Granollers - Sabadell Km. 13,3
Poligono Argelagues
08185 Lliçà de Vall
Spain
Telephone: +34 (9)3 843 95 68
Fax: +34 (9)3 843 83 59

ArvinMeritor Inc.
World Headquarters
2135 West Maple Road
Troy, Michigan 48084
U.S.A.
Telephone: +1 248 435 1000

ArvinMeritor
Commercial Vehicle Aftermarket AG
Neugutstrasse 89
8600 Dübendorf
Switzerland
Telephone: +41 (0)1 824 8200
Fax: +41 (0)1 824 8264

ArvinMeritor
Commercial Vehicle Systems
Postbus 255
5700AG Helmond
Churchillaan 204A
5705BK Helmond
Holland
Telephone: +31 (0)492 535805
Fax: +31 (0)492 547175

ArvinMeritor South Africa
Commercial Vehicle Systems
Telephone: +27 (0) 83 602 1603

For further information contact

Meritor HVS Limited
Commercial Vehicle Systems
Rackery Lane, Llay
Wrexham LL12 0PB
U.K.
Telephone: +44 (0)1978 852141
Fax: +44 (0)1978 856173

www.arvinmeritor.com

© Copyright 2001
Meritor Automotive
All rights Reserved

Publication 4.94.1B

Descriptions and specifications were in effect at the time of publication and are subject to change without notice or liability. Meritor reserve the right to make design improvements, change or discontinue parts at any time.

ArvinMeritor™