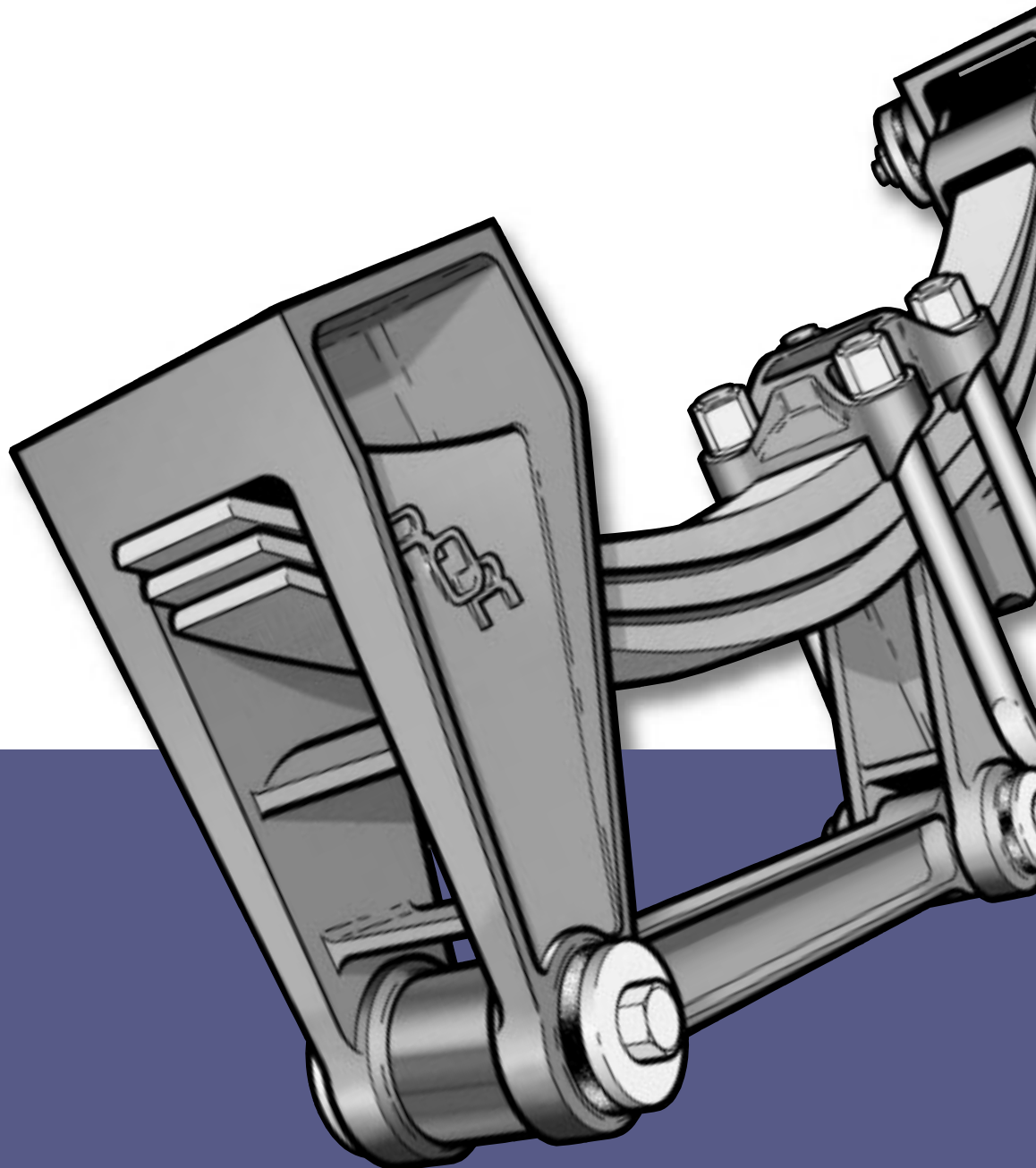




an **ArvinMeritor** brand

Meritor M, SM, SMT Suspension Parts List



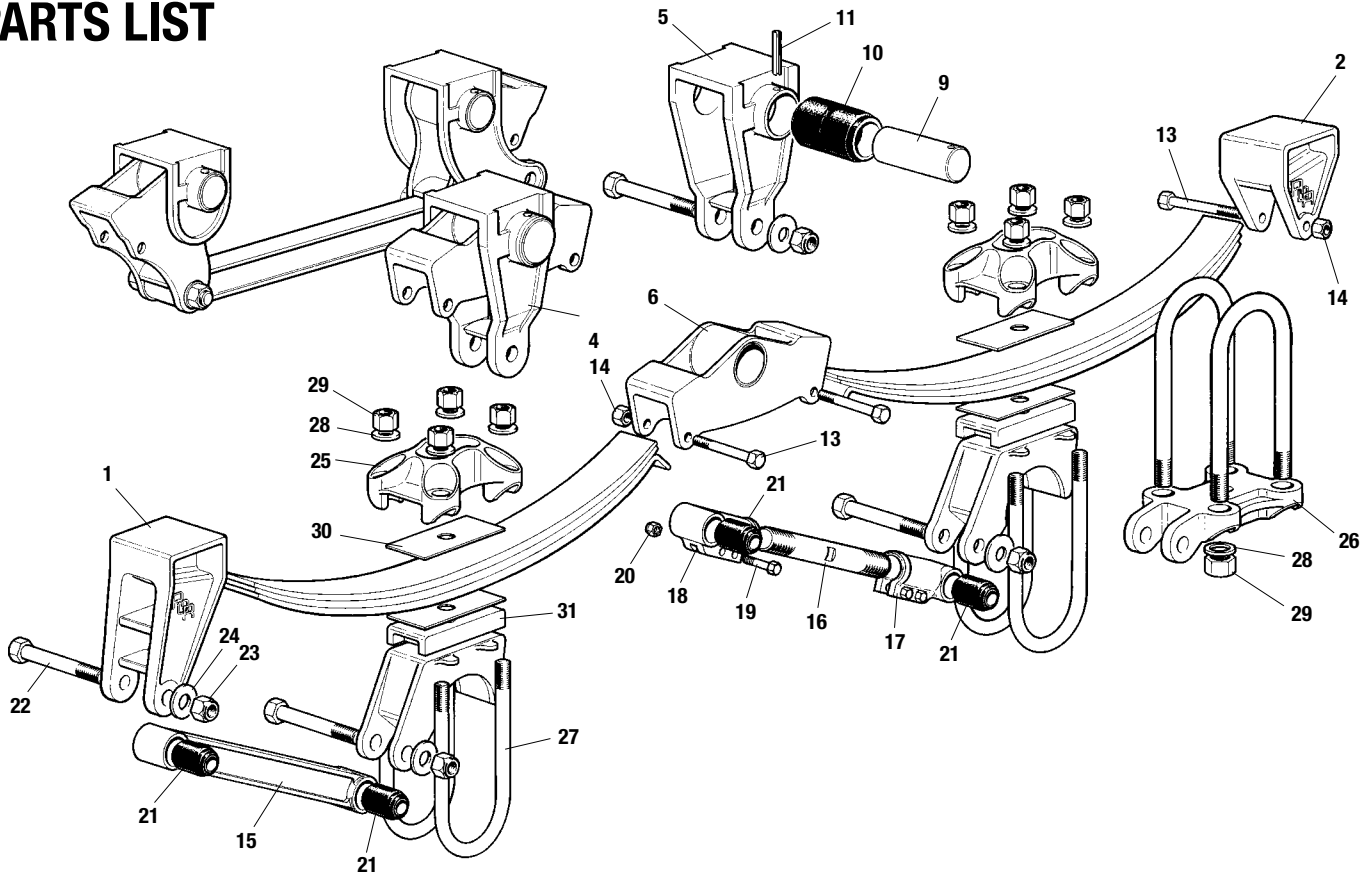
ArvinMeritorTM



an ArvinMeritor brand

M Suspension

PARTS LIST



Hanger Brackets

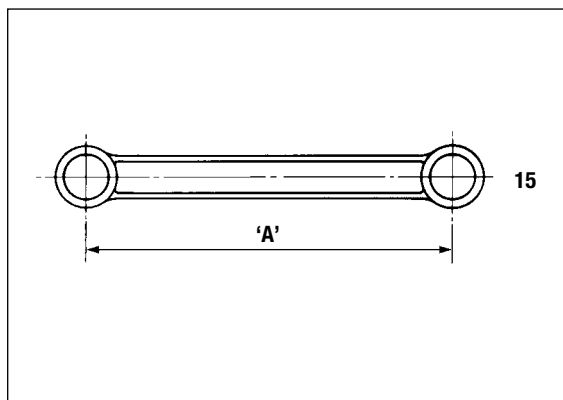
Front	1		21016374	
Rear	2		21206082	

Equalisers

		Close Coupled	Semi-widespread	Widespread
Complete Assembly	4	19016501	19025443	19017215 (FRH) 19017214 (FLH) 19017230 (RRH) 19017229 (RLH)
Complete Assembly – Offset Assembly		19212105/105 RH		
Complete Assembly – Offset Assembly		19212106/105 LH		
Complete Assembly – Offset Assembly		19202677/160 RH		
Complete Assembly – Offset Assembly		19202678/160 LH		
Equaliser Bracket	5	21016379	21016379	21017212 (F) 21017213 (R)
Equaliser Bracket – Offset – 105		21212107/105		
Equaliser Bracket – Offset – 160		21202676/160		
Equaliser c/w bush	6	19016378A	19025434A	19017211A
Equaliser c/w bush – Offset 105		21212108A/105 RH		
		21212109A/105 LH		
Equaliser c/w bush – Offset 160		21202674A/160 RH		
		21202675A/160 LH		
Shaft	9	21016381S	21016381S	21016381S
Shaft		21212115S (105)		
Shaft		21201620S (160)		
Bush	10	21011746	21011746	21011746
Drive Pin	11	21016382	21016382	21016382
Bolt	13	21206055	21206055	21206055
Nut	14	21206037	21206037	21206037

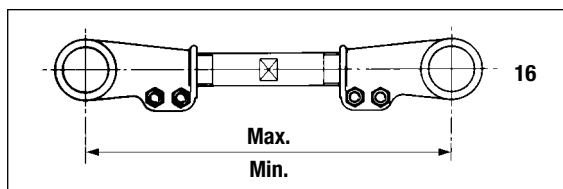
M Suspension

Torque Arms Rigid



Assembly Part No.	'A' Centres	Casting No.
19015935	508	21015019
19015936	425	21015728
19016345	464	21016343
19016346	549	21016344
19017126	699	21017096
19016645	400	21016643
19016646	489	21016644
19020813	565	21020812
19021083	813	21021084
19024873	337	21024872
19025442	629	21025441
19200655	352	21200654
19024387	381	21024388
19200121	537	21200119
19200122	438	21200120

Torque Arms Adjustable



Assembly Part No.	Screw Part No.	Max/Min Centres mm
19016341	21016126	498/441
19016342	21016433	562/502
19017118	21016124	438/381
19017757	21017758	378/327
19019400	21019394	406/349
19023170	21018359	648/584
19201539	21201540	838/775

Torque Arm End Assembly

		Assembly Part No.
Complete Torque Arm End Assembly	RH 17	19015798
	LH	19015799
Torque Arm End	RH 18	21013636
	LH	21013637
Bolt	19	702220814
Nut	20	21016384
Bush	21	21011745

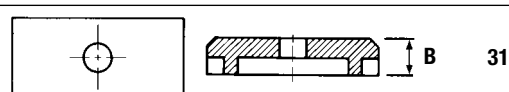
Fastenings, Torque Arm

Torque Arm Bolt	22	21015626
Torque Arm Locknut	23	21016115
Torque Arm Washer	24	21206539

'U' Bolts and Associated Items

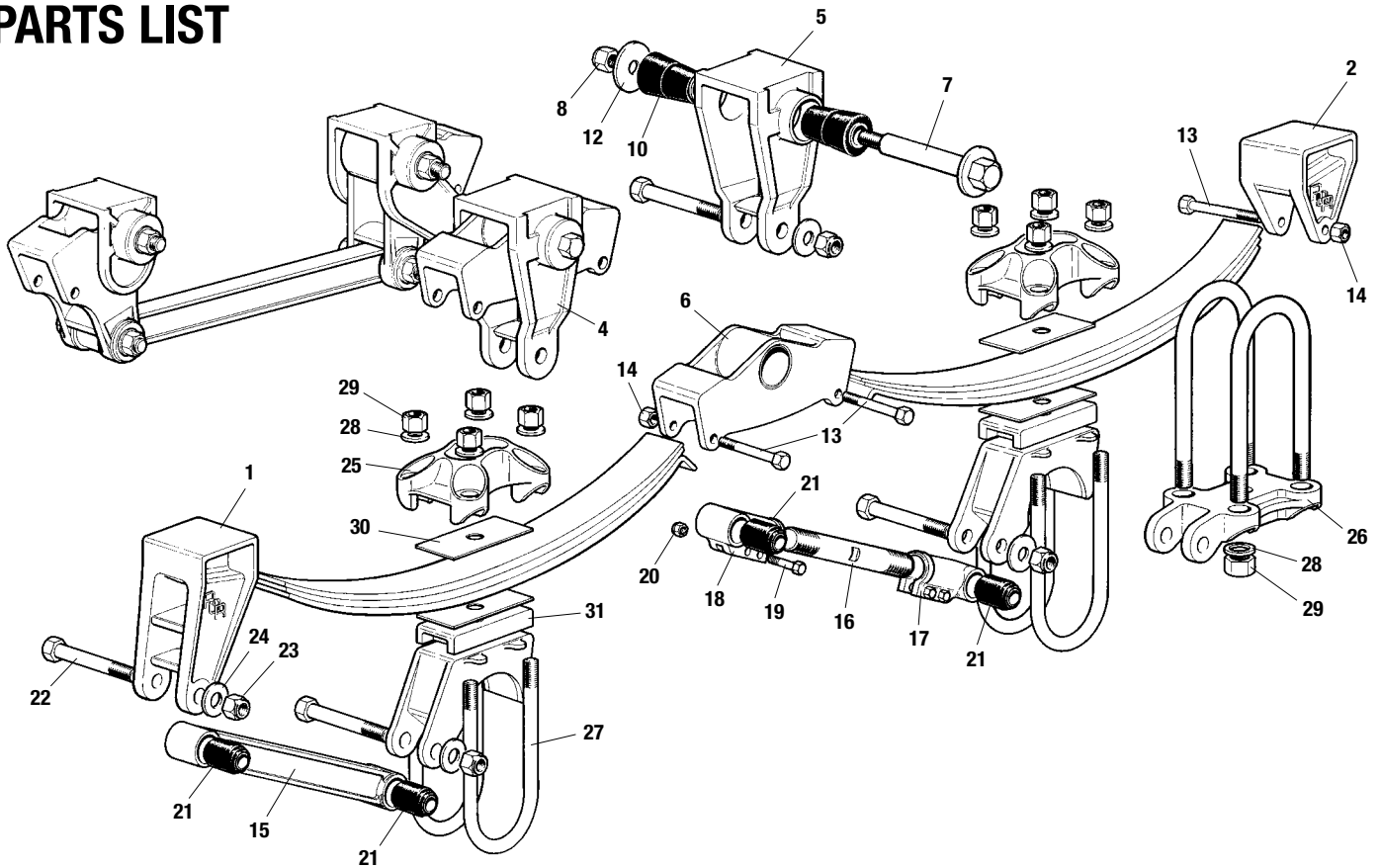
Top Plate (standard applications)	25	21206056
Torque Arm Mounting Bracket (underslung application)	26	21200109
'U' Bolt	27	21206225
Washer, 'U' Bolt	28	21206539
Nut, 'U' Bolt	29	21006511
Delrin Liner	30	21016639
Location Button, Underslung (not illustrated)	30A	21200339

Spacer Block

		Part No.	Dim. B
		21017317	70
		21019698	25
		21018636	38
		21019763	45

SM Suspension

PARTS LIST



Hanger Brackets

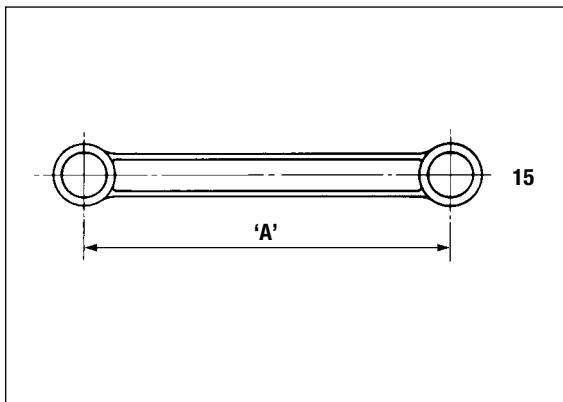
Front	1		21016374	
Rear	2		21206082	

Equalisers

		Close Coupled	Semi-widespread	Widespread
Complete Assembly	4	19203139	19204063	19204034 (F) 19204033 (R)
Equaliser Bracket	5	21203140	21203140	21204037 (F) 21204035 (R)
Equaliser	6	21203141A	21204062	21204036
Bolt Equaliser	7	21206000	21206000	21206000
Equaliser Bolt Locknut	8	21206001	21206001	21206001
Bush	10	21020676	21020676	21020676
Clamp Washer	12	21020678	21020678	21020678
Bolt	13	21206055	21206055	21206055
Nut	14	21206037	21206037	21206037

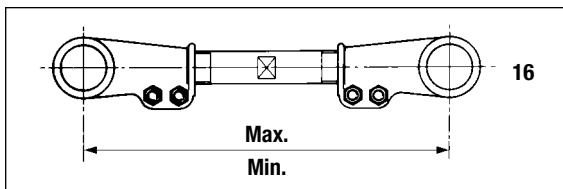
SM Suspension

Torque Arms Rigid



Assembly Part No.	'A' Centres	Casting No.
19015935	508	21015019
19015936	425	21015728
19016345	464	21016343
19016346	549	21016344
19017126	699	21017096
19016645	400	21016643
19016646	489	21016644
19020813	565	21020812
19021083	813	21021084
19024873	337	21024872
19025442	629	21025441
19200655	352	21200654
19024387	381	21024388
19200121	537	21200119
19200122	438	21200120

Torque Arms Adjustable



Assembly Part No.	Screw Part No.	Max/Min Centres mm
19016341	21016126	498/441
19016342	21016433	562/502
19017118	21016124	438/381
19017757	21017758	378/327
19019400	21019394	406/349
19023170	21018359	648/584
19201539	21201540	838/775

Torque Arm End Assembly

		Assembly Part No.
Complete Torque Arm End Assembly	RH	17
	LH	18
Torque Arm End	RH	19
	LH	20
Bolt		21
Nut		22
Bush		23

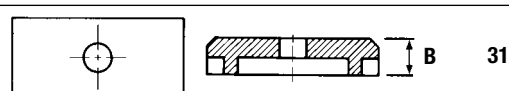
Fastenings, Torque Arm

Torque Arm Bolt	22	21015626
Torque Arm Locknut	23	21016115
Torque Arm Washer	24	21206539

'U' Bolts and Associated Items

Top Plate (standard applications)	25	21206056
Torque Arm Mounting Bracket (underslung application)	26	21200109
'U' Bolt	27	21206225
Washer, 'U' Bolt	28	21206539
Nut, 'U' Bolt	29	21006511
Delrin Liner	30	21016639
Location Button, Underslung (not illustrated)	30A	21200339

Spacer Block

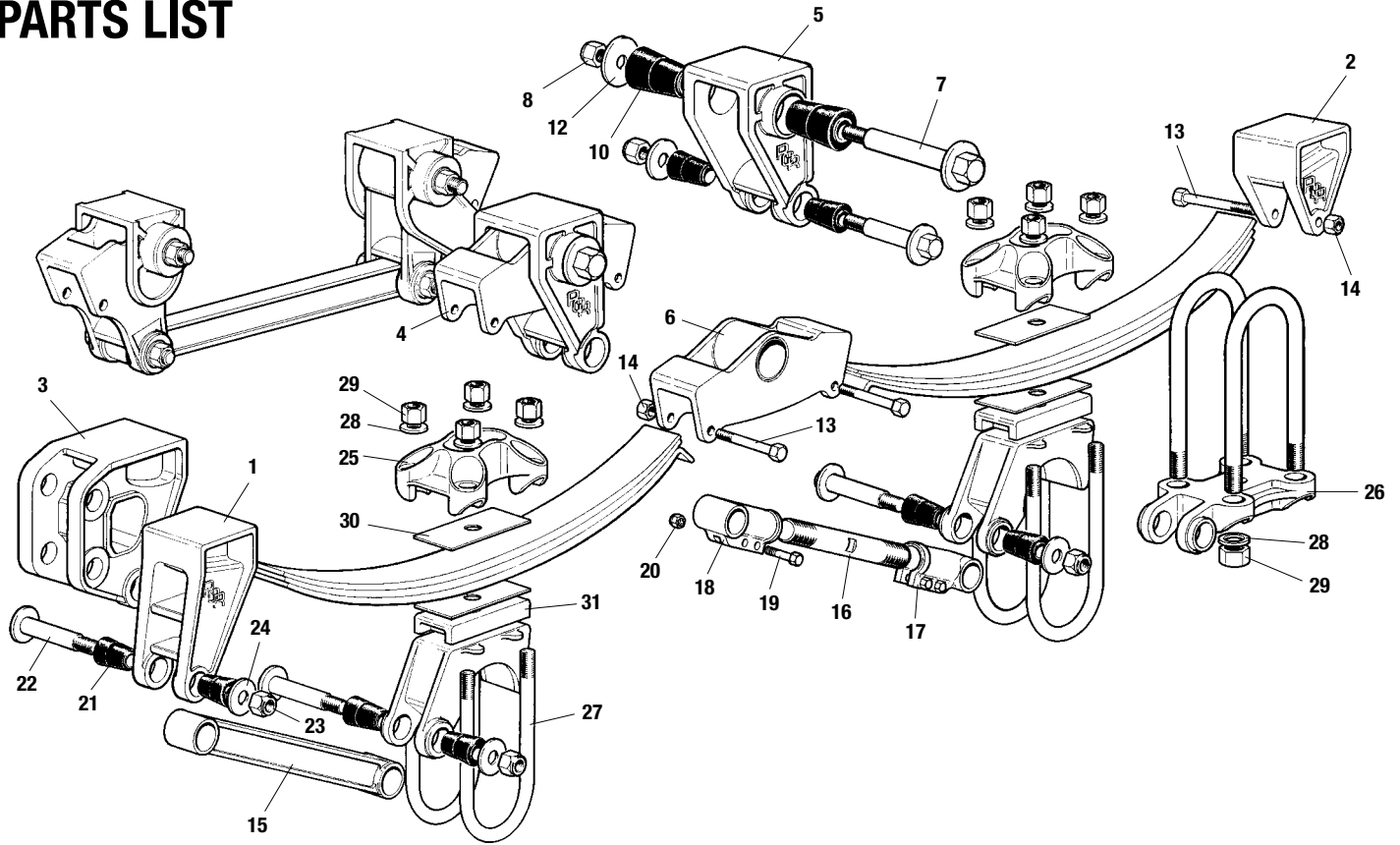
		Part No.	Dim. B
		21017317	70
		21019698	25
		21018636	38
		21019763	45



an ArvinMeritor brand

SMT Suspension

PARTS LIST



Hanger Brackets

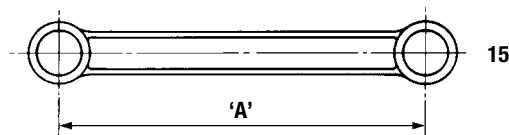
Front	1		21205836	
Rear	2		21206082	
Drawbar	3		21206941	

Equalisers

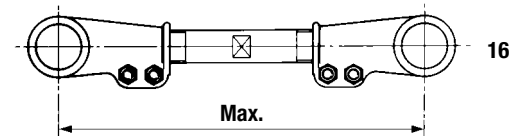
		Close Coupled	Semi-widespread	Widespread
Complete Assembly	4	19206038	19206221	
Complete Assembly – Heavy Duty		19221280		19206132 (F)
Complete Assembly – Heavy Duty		19221280		19206131 (R)
Complete Assembly – Offset Assembly		19212382/110 RH		
Complete Assembly – Offset Assembly		19212383/110 LH		
Equaliser Bracket	5	21205837	21205837	21204037 (F) 21206133 (R)
Equaliser Bracket – Offset 110		21212384/110		
Equaliser	6	21203141A	21204062	21206134
Equaliser – Heavy Duty		21212538		
Equaliser – Offset 110 RH		21212385/110 RH		
Equaliser – Offset 110 LH		21212386/110 LH		
Bolt Equaliser	7	21206000	21206000	21206000
Bolt Equaliser		21212390 (110)		
Equaliser Bolt Locknut	8	21206001	21206001	21206001
Bush	10	21020676	21020676	21020676
Tube Spacer	10A	21212388 (110)	–	–
Clamp Washer	12	21020678	21020678	21020678
Bolt	13	21206055	21206055	21206055
Nut	14	21206037	21206037	21206037

SMT Suspension

Torque Arms Rigid

	Part/Casting No.	'A' Centres
	15	21205839
21206135		381
21206136		699
21206138		549
21206140		438
21206141		337
21206142		360
21206256		406
21204055		450

Torque Arms Adjustable

	Assembly Part No.	Screw Part No.	Max/Min Centres mm
	16	19206039	21016126
19206143		21016433	562/502
19206144		21016124	438/381
19206145		21017758	378/327
19206146		21019394	406/349
19206147		21018359	648/584

Torque Arm End Assembly

		Assembly Part No.
Complete Torque Arm End Assembly	RH	19209548
	LH	19209549
Torque Arm End	RH	21205840
	LH	21205841
Bolt	19	21206054
Nut	20	21206037
Bush	21	21202104

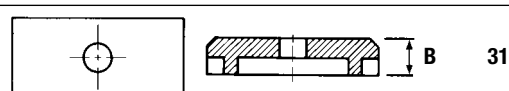
Fastenings, Torque Arm

Torque Arm Bolt	22	21202094
Torque Arm Locknut	23	21206001
Torque Arm Washer	24	21202092

'U' Bolts and Associated Items

Top Plate (standard applications)	25	21206056
Torque Arm Mounting Bracket (underslung application)	26	21206139
'U' Bolt	27	21206225
Washer, 'U' Bolt	28	21206539
Nut, 'U' Bolt	29	21006511
Delrin Liner	30	21016639
Location Button, Underslung (not illustrated)	30A	21200339

Spacer Block

	Part No.	Dim. B
	31	21017317
21019698		25
21018636		38
21019763		45



an ArvinMeritor brand

Springs

Part No.	No. of Leaves	Length mm	Thickness mm	Comments
21017560	Single	1221	41	1360 Axle Spacing
21200891	Single	1198	41	1360 Axle Spacing, Tri-Axle Centre Spring
21017788	Single	1221	38	1360 Axle Spacing
21021021	Single	1198	38	1360 Axle Spacing, Tri-Axle Centre Spring
21214495	Single	1175	38	1310 Axle Spacing, Low Camber
21214496	Single	1170	38	1310 Axle Spacing, Tri-Axle Centre Spring – low camber
21218360	Single	1175	41	1310 Axle Spacing
21218361	Single	1170	41	1310 Axle Spacing, Tri-Axle Centre Spring
21210822	2	1210	65	1360 Axle Spacing
21210823	2	1190	65	1360 Axle Spacing, Tri-Axle Centre Spring
21211928	2	1210	65	1360 Axle Spacing, Underslung
21211929	2	1190	65	1360 Axle Spacing, Tri-Axle Centre Spring, Underslung
21214502	2	1152	59	1310 Axle Spacing
21214503	2	1128	59	1310 Axle Spacing, Tri-Axle Centre Spring
21214578	2	1152	59	1310 Axle Spacing, Underslung
21214579	2	1128	59	1310 Axle Spacing, Tri-Axle Centre Spring, Underslung
21214066	3	1152	78	1310 Axle Spacing
21214067	3	1128	78	1310 Axle Spacing, Tri-Axle Centre Spring
21204279	3	1197	78	1360 Axle Spacing
21204921	3	1175	78	1360 Axle Spacing, Tri-Axle Centre Spring
21204922	3	1175	78	1360 Axle Spacing, Tri-Axle Centre Spring, Underslung
21204923	3	1197	78	1360 Axle Spacing, Underslung
21214580	3	1152	78	1310 Axle Spacing, Underslung
21214581	3	1128	78	1310 Axle Spacing, Tri-Axle Centre Spring, Underslung
21215420	3	1000	69	1145 Axle Spacing
21215421	3	972	69	1145 Axle Spacing, Tri-Axle Centre Spring
21217432	3	1000	69	1145 Axle Spacing, Underslung
21217433	3	972	69	1145 Axle Spacing, Tri-Axle Centre Spring, Underslung
21019961	5 + 2p	1099	100	1245 Axle Spacing
21020425	5 + 2p	1099	100	1245 Axle Spacing, Underslung – convert from 21019961
21020876	5	1099	71	1245 Axle Spacing
21016923	6	1089	102	1265 Axle Spacing, Tri-Axle Centre Spring
21029750	6 + 1p	1210	102	1360 Axle Spacing
21024589	6	1210	90	1360 Axle Spacing, Low Camber
21024778	6	1175	90	1360 Axle Spacing, Tri-Axle Centre Spring – low camber
21200058	6 + 1p	1210	102	1360 Axle Spacing, Underslung – convert from 21019750
21200996	6 + 1p	1175	102	1360 Axle Spacing, Tri-Axle Centre Spring
21209864	6 + 1p	1175	102	1360 Axle Spacing, Tri-Axle Centre Spring, Underslung
21016922	7 + 1p	1108	102	1265 Axle Spacing
21024587	7	1210	109	1360 Axle Spacing – low camber spring
21024779	7	1175	109	1360 Axle Spacing, Tri-Axle Centre Spring – low camber
21200108	7	1210	100	1360 Axle Spacing
21200877	7	1210	100	1360 Axle Spacing, Underslung – convert from 21200108
21200997	7	1175	100	1360 Axle Spacing, Tri-Axle Centre Spring
21202210	7	1175	100	1360 Axle Spacing, Underslung – convert from 21200997
21017128	8	1210	102	1360 Axle Spacing, Underslung – convert from 21017650
21017650	8	1210	102	1360 Axle Spacing
21018612	8	1029	102	1135 Axle Spacing, Tri-Axle Centre Spring
21019196	8 + 1p	927	102	1040/1135 Axle Spacing
21019399	8 + 1p	845	102	1040 Axle Spacing, Tri-Axle Centre Spring
21020068	8 + 1p	927	102	1040/1135 Axle Spacing, Underslung – convert from 21019196
21020069	8 + 1p	845	102	1040 Axle Spacing, Underslung – convert from 21019399
21024734	8	1029	102	1135 Axle Spacing, Underslung – convert from 21018612
21200078	8	1210	114	1360 Axle Spacing
21200431	8	1210	114	1360 Axle Spacing, Underslung – convert from 21200078
21200998	8	1175	114	1360 Axle Spacing, Tri-Axle Centre Spring
21203367	8	1175	114	1360 Axle Spacing, Tri-Axle Centre Spring, Underslung
21212847	8	1045	102	1200 Axle Spacing
21212848	8	1020	102	1200 Axle Spacing, Tri-Axle Centre Spring



an ArvinMeritor brand

Springs

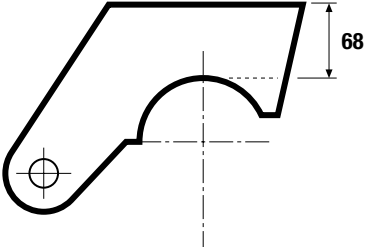
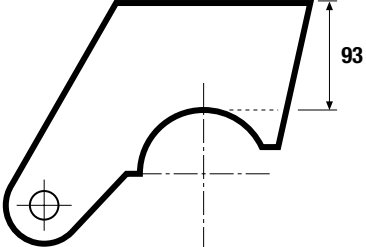
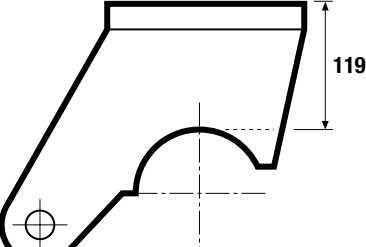
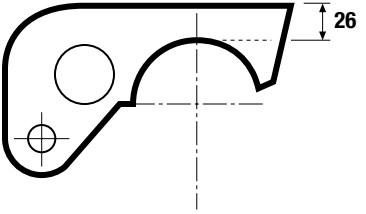
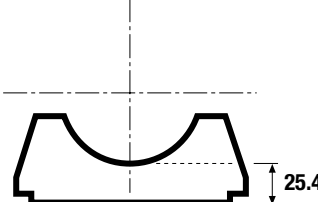
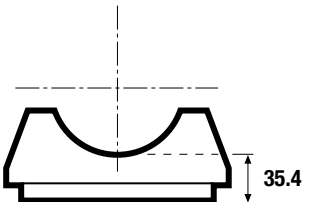
Part No.	No. of Leaves	Length mm	Thickness mm	Comments
21017651	9	1210	114	1360 Axle Spacing
21019555	9	1210	114	1360 Axle Spacing, Underslung – convert from 21017651
21023701	9	1175	114	1360 Axle Spacing, Tri-Axle Centre Spring
21201289	9	1210	129	1360 Axle Spacing
21209244	9	1175	129	1360 Axle Spacing, Tri-Axle Centre Spring
21211383	9	1210	129	1360 Axle Spacing, Underslung – convert from 21201289
21017682	10	1210	127	1360 Axle Spacing
21017798	10	1210	127	1360 Axle Spacing, Underslung – convert from 21017682
21200067	10	953	111	1100 Axle Spacing
21200068	10	902	111	1100 Axle Spacing, Tri-Axle Centre Spring
21200284	10	1175	127	1360 Axle Spacing, Tri-Axle Centre Spring
21203522	10	1213	143	1360 Axle Spacing
21220527	10	1213	143	1360 Axle Spacing, Underslung – convert from 21203522
21203636	10	1182	143	1360 Axle Spacing, Tri-Axle Centre Spring
21220528	10	1182	143	1360 Axle Spacing, Underslung – convert from 21203636
21024588	11	933	96	1080 Axle Spacing – low camber spring
21203869	11	889	96	1080 Axle Spacing, Tri-Axle Centre Spring – low camber spring
21203629	11	1213	157	1360 Axle Spacing
21203630	11	1182	157	1360 Axle Spacing, Tri-Axle Centre Spring
21025427	12	1210	152	1360 Axle Spacing
21211035	12	1210	152	1360 Axle Spacing, Underslung – convert from 21025427
21202467	12	1175	152	1360 Axle Spacing, Tri-Axle Centre Spring
21211036	12	1175	152	1360 Axle Spacing, Underslung – convert from 21202467



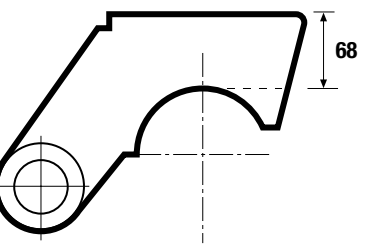
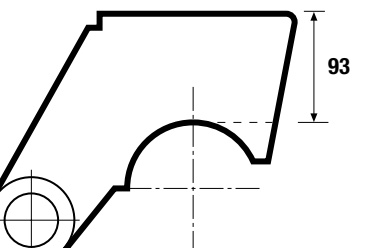
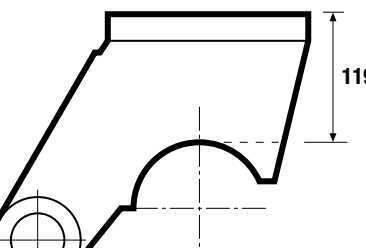
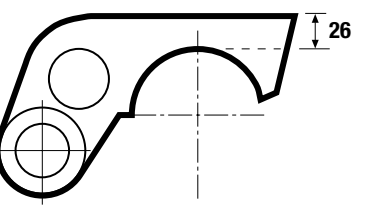
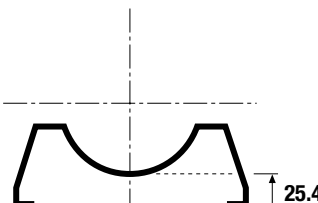
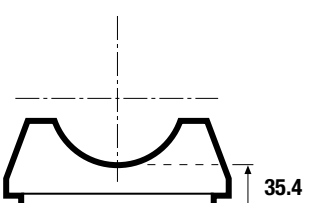
an ArvinMeritor brand

Spring Seats

M & SM

 <p>21017616</p>	 <p>21017617</p>	 <p>21020407</p>
 <p>21024150</p>	 <p>21018673</p>	 <p>21201739</p>

SMT

 <p>21205838</p>	 <p>21206070</p>	 <p>21206111</p>
 <p>21206071</p>	 <p>21018673</p>	 <p>21201739</p>

Suspension Kits

SUS 1



TORQUE ARM BUSH/BOLT KIT

Suitable for M & SM Series Suspensions

Qty	Component	Part No.
2	Torque Arm Bolt	21015626
2	Torque Arm Bush	21011745
2	Washer	21206539
2	Locknut	21016115

SUS 2



EQUALISER BUSH KIT

Suitable for SMT, SM and T Series Suspensions

Qty	Component	Part No.
1	Equaliser Shaft	21206000
1	Nut	21206001
2	Bush	21020676
1	Washer	21020678

SUS 3



TORQUE ARM BUSH/BOLT KIT

Suitable for all SMT Suspensions

Qty	Component	Part No.
2	Torque Arm Bolt	21202094
2	Locknut	21206001
2	Washer	21202092
4	Bush	21202104

SUS 4



EQUALISER BUSH KIT

Suitable for M Series Suspensions

Qty	Component	Part No.
1	Shaft	21016381S
1	Bush	21011746
1	Pin	21016382



Warranty

A comprehensive network of original parts distributors and service stations operate throughout Europe; this is supported internationally with agents strategically placed around the world.

All Meritor replacement parts obtained through original parts distributors are covered by a one year warranty.

For full warranty terms and conditions see 'Meritor Warranty Terms and Conditions' Publication No 4.84.1

Meritor reserve the right to make changes in specifications shown herein or add improvements at any time without notice or obligation.

PARTS SHOWN IN THIS SPARES LIST ARE MADE FROM DRAWINGS IN WHICH COPYRIGHT SUBSISTS. THE MAKING OF COPIES OF ANY OF THESE PARTS IS PROHIBITED.

© Meritor HVS Limited



The high quality assurance management systems applied by Meritor are endorsed with the awarding of ISO 9001, Lloyd's Register Quality Assurance.



an **ArvinMeritor** brand



an **ArvinMeritor** brand



an **ArvinMeritor** brand

Meritor HVS Limited
Commercial Vehicle Systems
Rackery Lane, Llay
Wrexham LL12 0PB
U.K.
Telephone: +44 (0)1978 852141
Fax: +44 (0)1978 856173

Meritor HVS (Mityr-Mory) S.A.
Commercial Vehicle Systems
Z.I. du Moulin à Vent
9 rue des Frères Lumière
77290 Mityr-Mory
France
Telephone: +33 (0)1 64.27.44.61
Fax: +33 (0)1 64.27.30.45

Meritor HVS (Verona) s.r.l.
Commercial Vehicle Systems
Via Monte Fiorino, 23
37057 San Giovanni Lupatoto
Verona
Italy
Telephone: +39 045 8750399
Fax: +39 045 8750640 / 8750513

Meritor HVS (Barcelona) S.A.
Commercial Vehicle Systems
Ctra. Granollers - Sabadell Km. 13,3
Poligono Argelagues
08185 Lliçà de Vall
Spain
Telephone: +34 (9)3 843 95 68
Fax: +34 (9)3 843 83 59

ArvinMeritor Inc.
World Headquarters
2135 West Maple Road
Troy, Michigan 48084
U.S.A.
Telephone: +1 248 435 1000

ArvinMeritor
Commercial Vehicle Aftermarket AG
Neugutstrasse 89
8600 Dübendorf
Switzerland
Telephone: +41 (0)1 824 8200
Fax: +41 (0)1 824 8264

ArvinMeritor
Commercial Vehicle Systems
Postbus 255
5700AG Helmond
Churchillaan 204A
5705BK Helmond
Holland
Telephone: +31 (0)492 535805
Fax: +31 (0)492 547175

ArvinMeritor South Africa
Commercial Vehicle Systems
Telephone: +27 (0) 83 602 1603

For further information contact

Meritor HVS Limited
Commercial Vehicle Systems
Rackery Lane, Llay
Wrexham LL12 0PB
U.K.
Telephone: +44 (0)1978 852141
Fax: +44 (0)1978 856173

www.arvinmeritor.com

© Copyright 2001
Meritor Automotive
All rights Reserved

Publication 4.08.7

Descriptions and specifications were in effect at the time of publication and are subject to change without notice or liability. Meritor reserve the right to make design improvements, change or discontinue parts at any time.

ArvinMeritor™